

PHILADELPHIA INTERNATIONAL AIRPORT

Runway 17-35 Extension Project

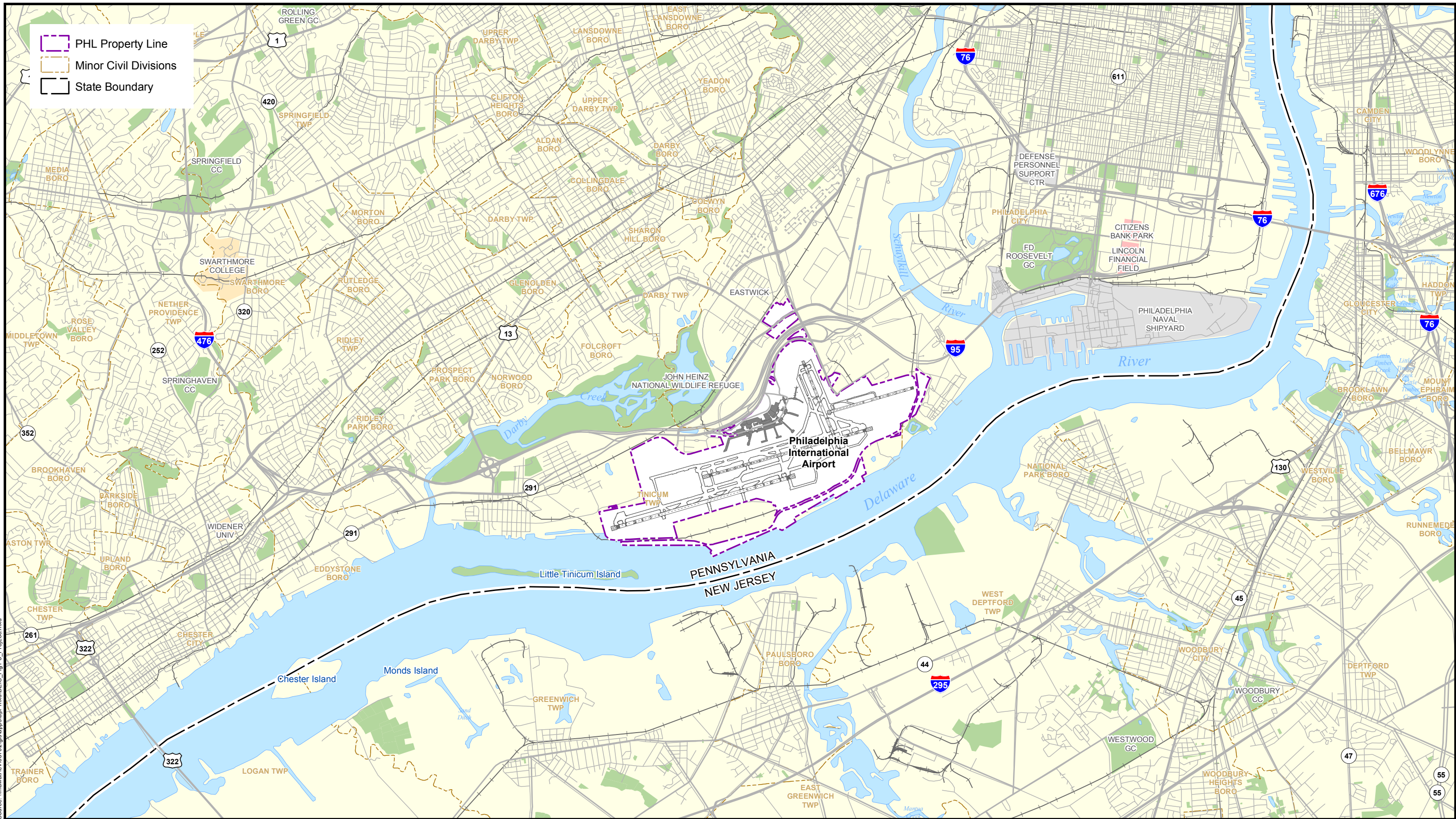
Final Environmental Impact Statement



credit: Rick McMullin, Philadelphia Airport System

MARCH 2005

VOLUME 2
FIGURES



Graphic File: \\mawave\new08702\gis\output\perf\DEIS\DEIS_Fig1-3_ProjLoc.pdf
 Source: \\mawave\new08702\gis\output\perf\DEIS\DEIS_Fig1-3_ProjLoc.mxd

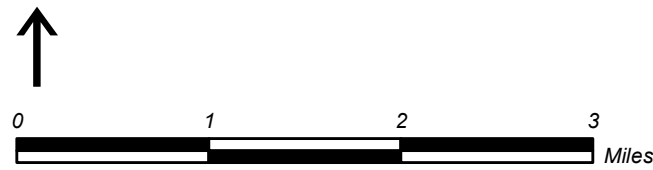
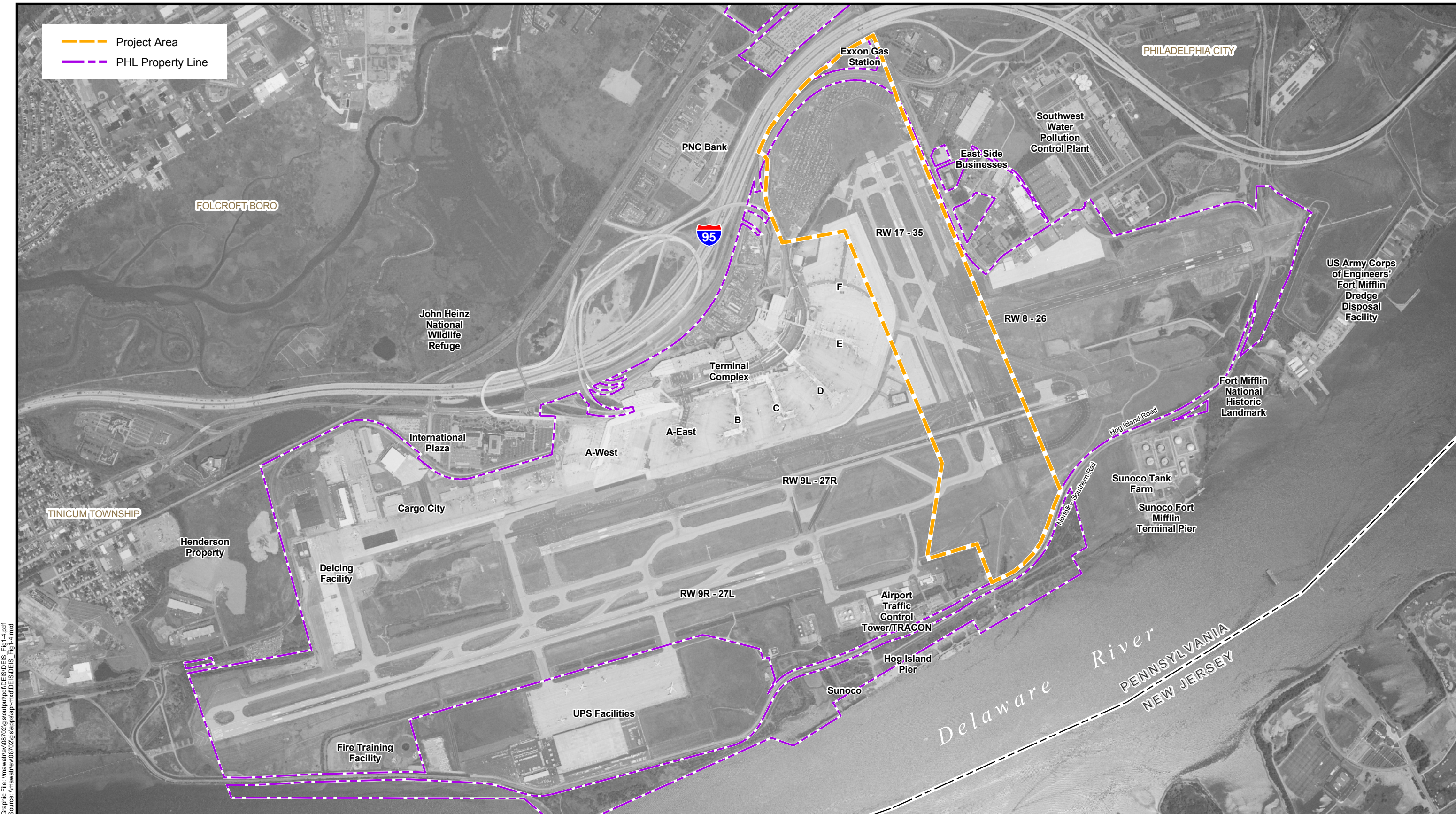


Figure 1-3
Proposed Project Location

Source: HMMH



Graphic File: \\mawarview\08702\gis\output\pdf\DEIS\DEIS_Fig1-4.pdf
 Source: \\mawarview\08702\gis\output\pdf\DEIS\DEIS_Fig1-4.mxd

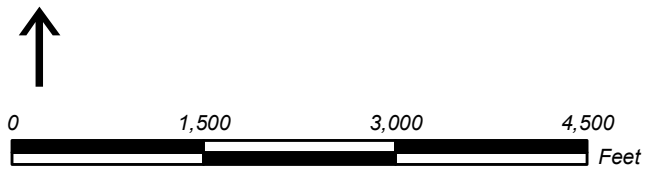
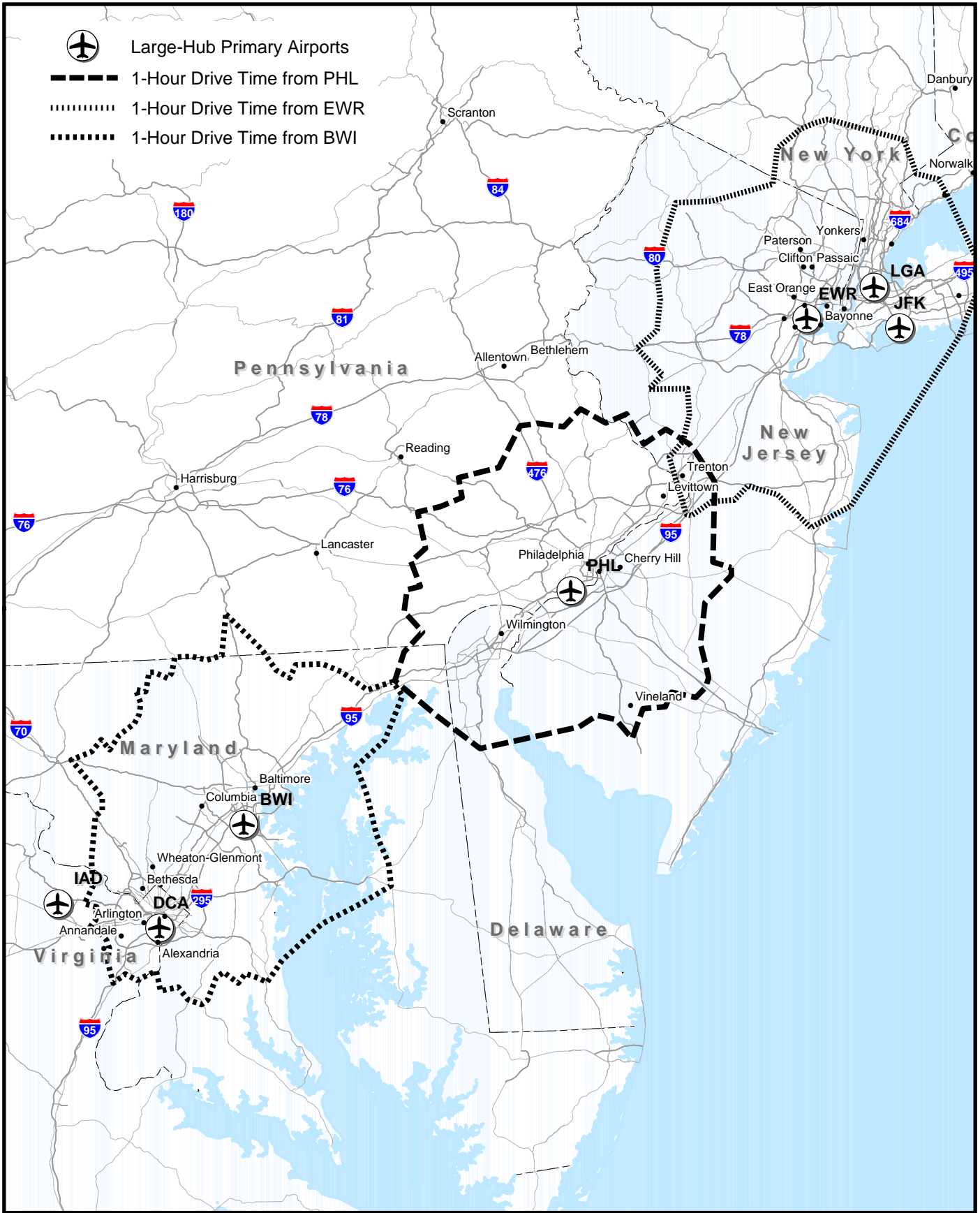


Figure 1-4
Philadelphia International Airport

Source: VHB, DMJM Aviation



Graphic File: \\mawar\ne\08702\gis\out\pdf\DEIS\DEIS_Fig3-2_LGHHubAirports.mxd
 Source: \\mawar\ne\08702\gis\app\lapr\mxd\DEIS_Fig3-2_LGHHubAirports.mxd

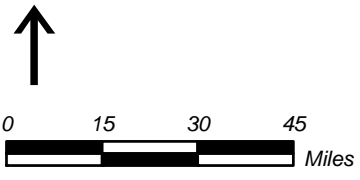
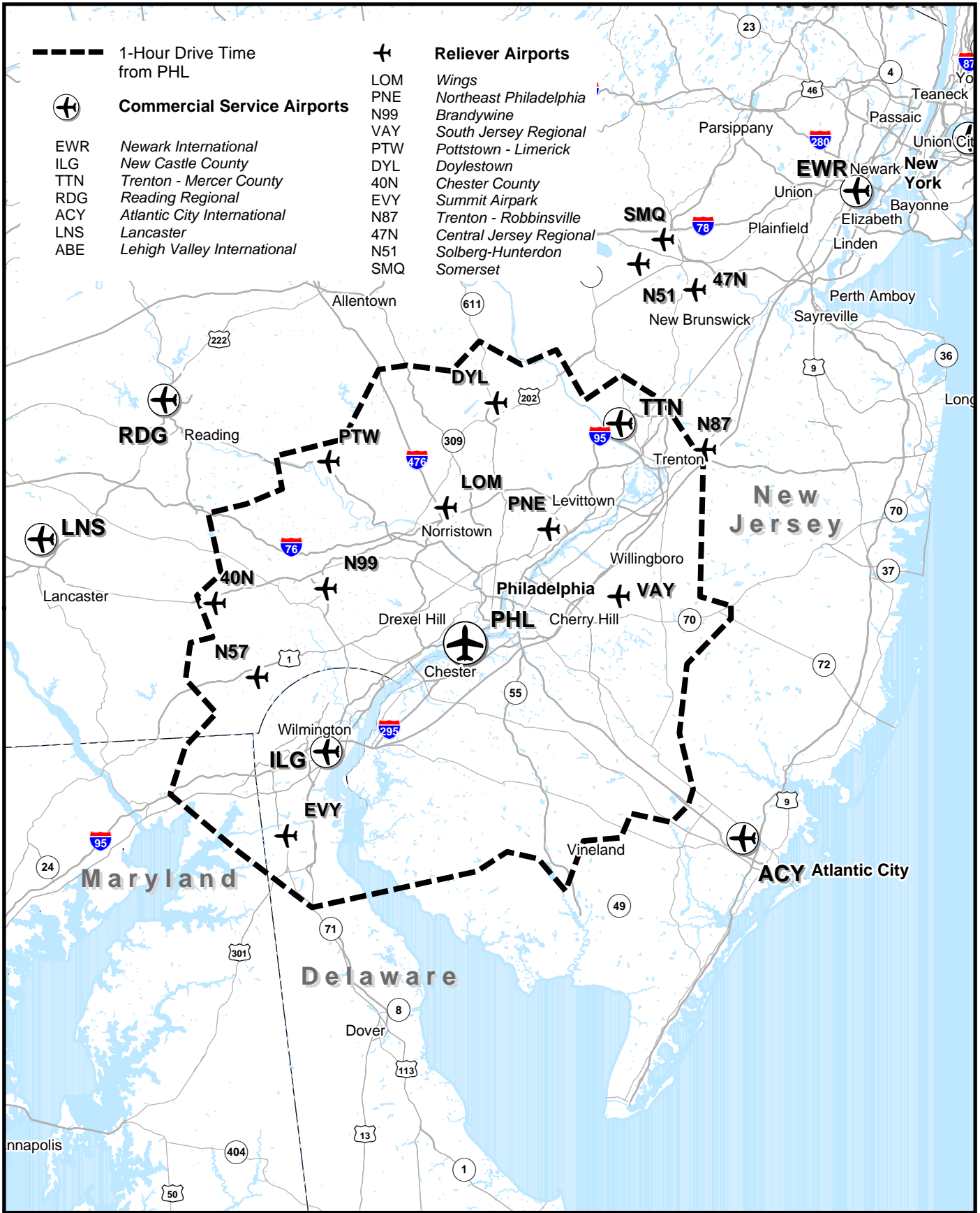


Figure 3-2
Large Hub Airports and 1-Hour Drive Times

Source: VHB, GDT Streets - 2001



Graphic File: \\mawatt\ev\08702\gis\output\pdf\DEIS\DEIS_Fig3-3_Airports.pdf
 Source: \\mawatt\ev\08702\gis\apps\app\mxd\DEIS\DEIS_Fig3-3_Airports.mxd

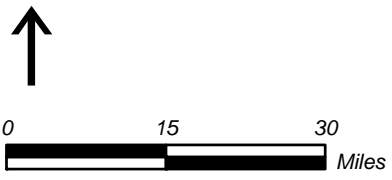


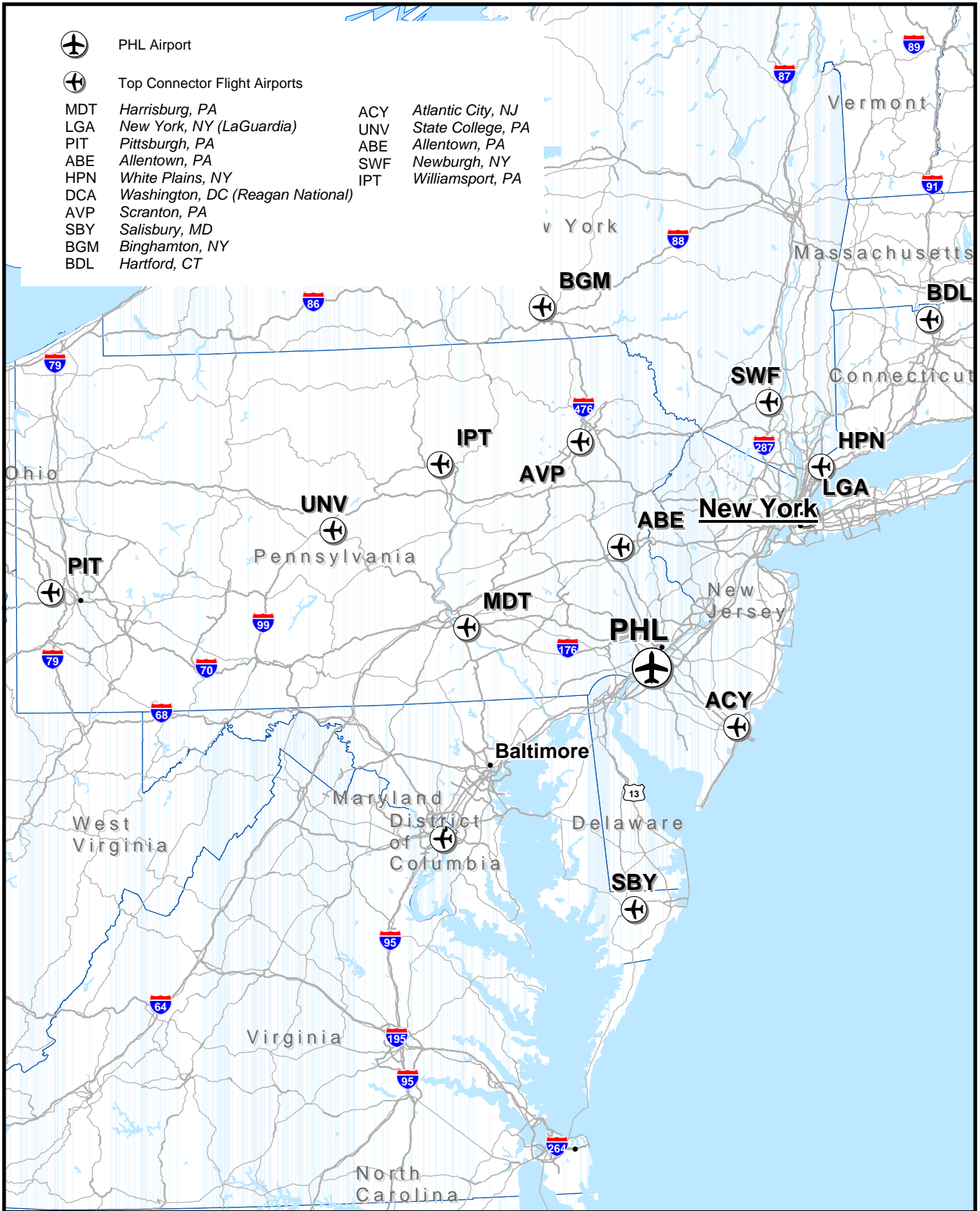


Figure 3-3
Airports in the Philadelphia Region

Source: VHB, GDT Streets - 2001

-  PHL Airport
 -  Top Connector Flight Airports
- | | | | |
|-----|----------------------------------|-----|-------------------|
| MDT | Harrisburg, PA | ACY | Atlantic City, NJ |
| LGA | New York, NY (LaGuardia) | UNV | State College, PA |
| PIT | Pittsburgh, PA | ABE | Allentown, PA |
| ABE | Allentown, PA | SWF | Newburgh, NY |
| HPN | White Plains, NY | IPT | Williamsport, PA |
| DCA | Washington, DC (Reagan National) | | |
| AVP | Scranton, PA | | |
| SBY | Salisbury, MD | | |
| BGM | Binghamton, NY | | |
| BDL | Hartford, CT | | |



Graphic File: \\mawar\ev\08702\gis\output\pdf\DEIS\DEIS_Fig3-4_TopConFlightMkts.pdf
 Source: \\mawar\ev\08702\gis\apps\prj\mxd\DEIS_Fig3-4_TopConFlightMkts.mxd

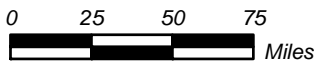
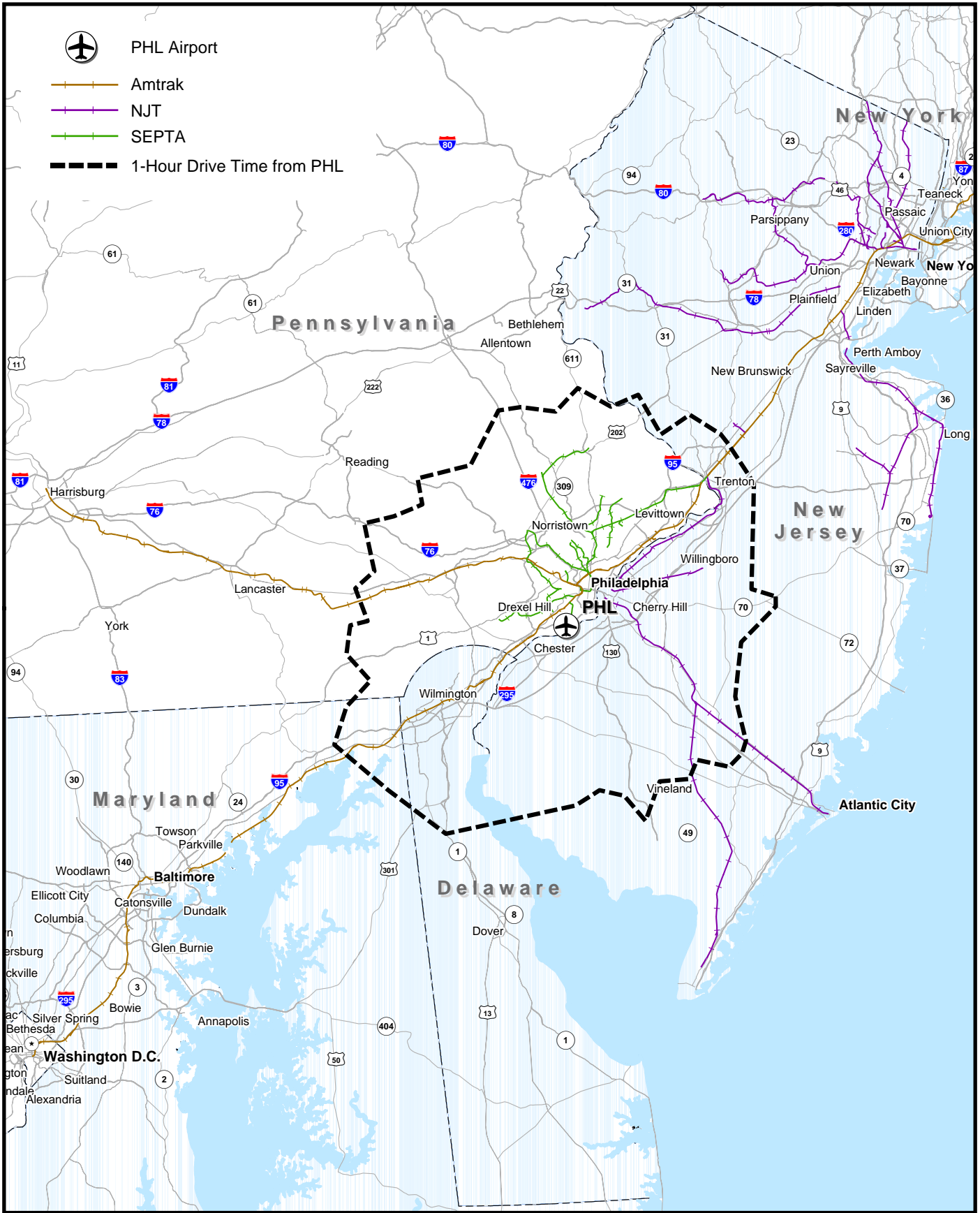


Figure 3-4

PHL Top Connector Flight Markets

Source: VHB



Graphic File: \mawatt\ev\08702\gis\output\DEIS\DEIS_Fig3-5_RoadRail.pdf
 Source: \mawatt\ev\08702\gis\app\paper\mxd\DEIS_Fig3-5_RoadRail.mxd

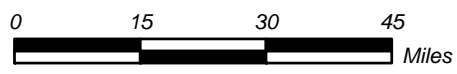
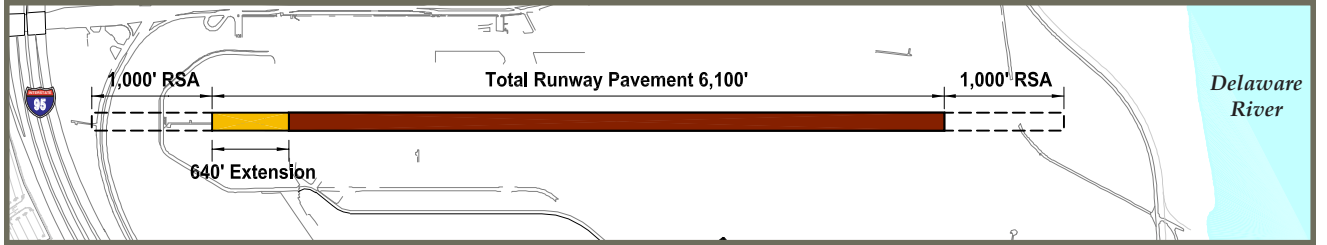


Figure 3-5
Regional and Local Highway and Rail System

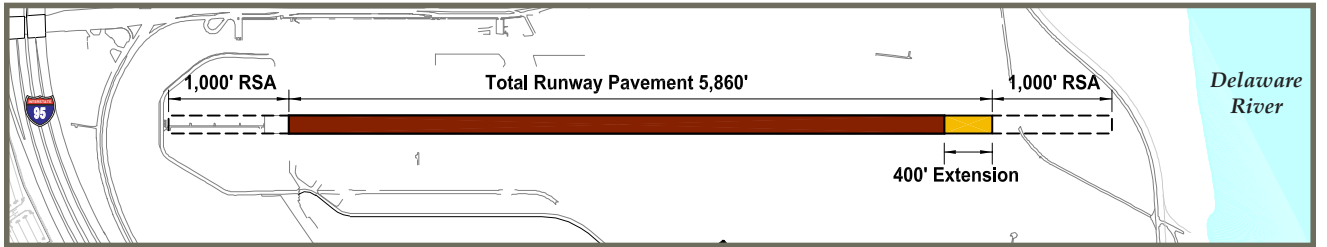
Source: VHB, NTAD 2001, GDT Streets - 2001



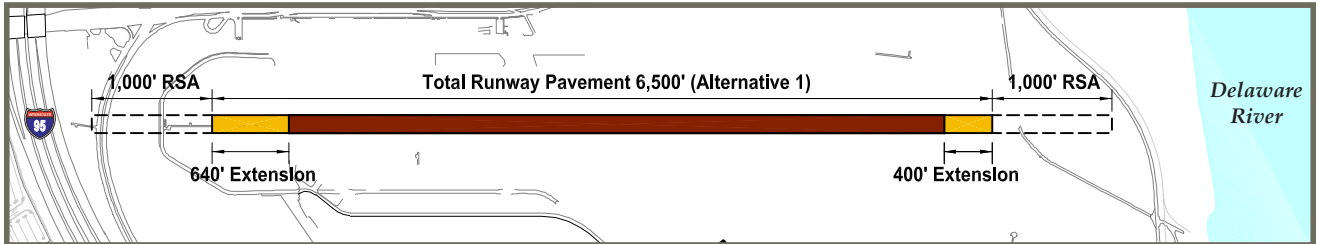
Existing Runway



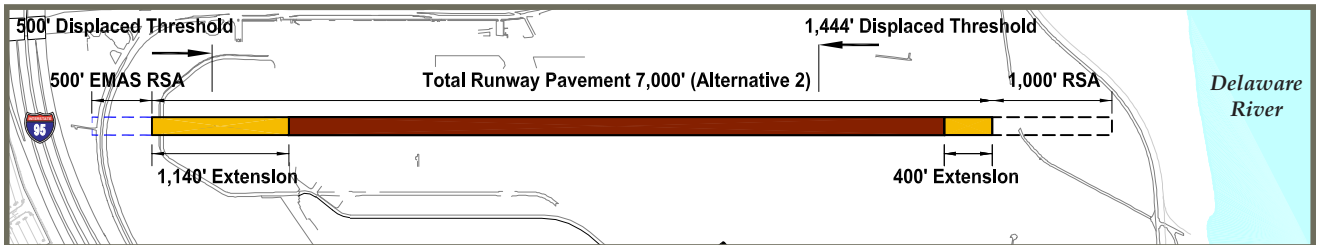
Option A



Option B



Option C



Option D

\\maw\nev\087\02\Graphics\Figures\Runway_Options-3.indd p.1



Figure 3-6

Runway 17-35 Extension Options