



PHILADELPHIA INTERNATIONAL AIRPORT
NORTHEAST PHILADELPHIA AIRPORT

PHL ✈ The Global Gateway of Choice

2017 ANNUAL REPORT



WHO WE ARE

The City of Philadelphia's Division of Aviation includes the Philadelphia International Airport (PHL), the only major airport serving the nation's seventh largest metropolitan area, and the Northeast Philadelphia Airport (PNE), the sixth busiest airport in Pennsylvania.

PHL is a large hub airport — the 19th busiest in the U.S. — serving more than 81,000 daily and nearly 30 million annual passengers. As of summer 2018, 26 airlines, including all major domestic carriers, offer over 500 daily departures to 131 destinations worldwide. Located 7 miles from downtown Philadelphia, the Airport, situated on 2,583 acres, is easily accessible and convenient to many tourist sites, business centers and cultural hubs. The Airport is self-sustaining and uses no local tax dollars. PHL is one of the largest economic engines in the region, generating \$15.4 billion to the economy and accounting for more than 96,000 full-time jobs annually.

Situated on 1,150 acres in the northeast part of the City of Philadelphia, PNE is a reliever airport for general aviation and corporate flight operations. It is surrounded by low density and light development to the east and west and to the northeast by a high-density residential area. The Airport averages 215 based aircraft, dominated by single engine aircraft, as well as twins, jets, turboprops and helicopters.

CONTENTS

- Message from the CEO2
- Non-Stop Destinations – Domestic & International.....5
- Passenger and Cargo Airlines.....5
- Connecting More People to More Places.....6
- Year in Review
 - Celebrating 20 Years of the Uniquely Philadelphia Exhibitions Program9
 - 2017 Milestones 13-15
- Strategic Goals: Together We'll Get You There.....16
- Financial Summary18



We proudly connect Philadelphia with the world.

MESSAGE FROM THE CEO



I am pleased to present my first annual report as CEO of the City of Philadelphia's Division of Aviation, a role that I assumed in January 2016. While 2016 was a year of transition, 2017 was marked by steady forward momentum in our efforts to create a positive customer experience in a facility committed to the safety and security of every single passenger and employee who walks through our doors. Today, I am happy to report that as a result of this focus, PHL is better — and continues to find new ways to build on our successes as the region's world-class global gateway of choice.

This annual report serves to celebrate our accomplishments of the past year and demonstrate how we are cementing the future of the Airport — and its role as an economic engine for the entire Greater Philadelphia region.

In 2017, we joined with American Airlines to announce a significant \$900 million commitment to continue critical improvements and develop new infrastructure at PHL and PNE over the next five to seven years. This ongoing Capital Development Program (CDP) will not only deliver needed improvements to our facility, but will also infuse almost \$4 billion in regional economic output over a five-year period — which equates to approximately 5,100 ongoing jobs over the same period. We are truly building for the future.

In October, we unveiled with our partners — American Airlines, OTG Management and PHL Marketplace — a completely redesigned and reimagined Terminal B that combines modern comfort and technology with beautiful free-flowing spaces. The tech-driven gate areas allow passengers to order food, drink

and amenities via iPads from the comfort of their gate. The new Terminal B reflects the spirit and tastes of our great city, and I know our passengers enjoy spending time here.

While we continue to transform our terminal and airfield into a state-of-the-art airport facility, we are also hard at work to attract new carriers and air service destinations for the region's travelers. In May 2017, we welcomed Icelandair's seasonal non-stop service to Reykjavik; throughout the year, the airport saw additional domestic service offerings from American Airlines, Alaska Airlines and Frontier Airlines, as well as an announcement that a new foreign-flag carrier Aer Lingus will begin service to Dublin in March 2018.

As of summer 2018, PHL offers 131 non-stop flights to 95 domestic and 36 international destinations, and the list continues to grow. This year, American Airlines has already kicked off new international service to Budapest, Mexico City, Prague and Zurich, and domestic service to Des Moines, Fort Wayne, Oklahoma City and Pensacola, with Houston-Hobby and Worcester coming in fall 2018. Frontier also has added new non-stop service to Madison and Omaha – further connecting the Philadelphia region and Pennsylvania to the world.

The Airport continues to demonstrate leadership in diversity and inclusion, as evidenced through contract awards, outreach events and hiring initiatives. In October 2017, our annual Business Opportunity Forum welcomed nearly 500 business representatives, including minority, woman-owned and disadvantaged enterprises, to share information about contracting opportunities available at the Airport.

When we first opened in 1940, the once-named Philadelphia Municipal Airport transported more than 40,000 passengers annually. Today, PHL has grown exponentially, serving 30 million passengers annually from the Philadelphia region and beyond. It is incredibly exciting to see where we will land next and whom we will welcome within our doors and on the airfield. Together, we are #ProudlyPHL.

Rochelle G. Cameron

Rochelle (Chellie) Cameron

Chief Executive Officer





“New direct service makes it easier
for Philadelphia travelers to visit and
explore the world.”

CHELLIE CAMERON | CEO, PHL AIRPORT

REYKJAVIK, ICELAND

Non-Stop Domestic Destinations*:

- Akron/Canton, Ohio **CAK**
- Albany, New York **ALB**
- Allentown, Pennsylvania **ABE**
- Atlanta, Georgia **ATL**
- Austin, Texas **AUS**
- Baltimore, Maryland **BWI**
- Bangor, Maine **BGR**
- Birmingham, Alabama **BHM**
- Boston, Massachusetts **BOS**
- Buffalo, New York **BUF**
- Burlington, Vermont **BTV**
- Charleston, South Carolina **CHS**
- Charleston, West Virginia **CRW**
- Charlotte, North Carolina **CLT**
- Charlottesville, Virginia **CHO**
- Chicago-Midway, Illinois **MDW**
- Chicago-O'Hare, Illinois **ORD**
- Cincinnati, Ohio **CVG**
- Cleveland, Ohio **CLE**
- Columbia, South Carolina **CAE**
- Columbus, Ohio **CMH**
- Dallas/Fort Worth, Texas **DFW**
- Dallas-Love Field, Texas **DAL**
- Dayton, Ohio **DAY**
- Denver, Colorado **DEN**
- Detroit-Wayne Co., Michigan **DTW**
- Erie, Pennsylvania **ERI**
- Fort Myers-Regional, Florida **RSW**
- Ft. Lauderdale, Florida **FLL**
- Grand Rapids, Michigan **GRR**
- Greensboro/H. Pt./Win.-Salem, N.C. **GSO**
- Greenville/Spartanburg, S.C. **GSP**
- Harrisburg, Pennsylvania **MDT**
- Hartford-Bradley, Connecticut **BDL**
- Houston-Intercontinental, Texas **IAH**
- Indianapolis, Indiana **IND**
- Ithaca, New York **ITH**
- Jacksonville, Florida **JAX**
- Kansas City-Intl., Missouri **MCI**
- Knoxville, Tennessee **TYS**
- Las Vegas, Nevada **LAS**
- Lexington, Kentucky **LEX**
- Long Island Macarthur-Islip, N.Y. **ISP**
- Los Angeles, California **LAX**
- Louisville, Kentucky **SDF**
- Manchester, New Hampshire **MHT**
- Memphis, Tennessee **MEM**
- Miami, Florida **MIA**
- Milwaukee, Wisconsin **MKE**
- Minneapolis/St Paul, Minnesota **MSP**
- Myrtle Beach, South Carolina **MYR**
- Nashville, Tennessee **BNA**
- New Haven, Connecticut **HVN**
- New Orleans, Louisiana **MSY**
- Newburgh, New York **SWF**
- Newport News/Williamsburg, VA **PHF**
- New York/Kennedy, New York **JFK**
- New York/La Guardia, New York **LGA**
- Norfolk/Va. Beach/Wmsbg., Virginia **ORF**
- Orlando, Florida **MCO**
- Phoenix, Arizona **PHX**
- Pittsburgh, Pennsylvania **PIT**
- Portland, Maine **PWM**
- Portland, Oregon **PDX**
- Providence, Rhode Island **PVD**
- Raleigh/Durham, North Carolina **RDU**
- Richmond/Wmsbg., Virginia **RIC**
- Roanoke, Virginia **ROA**
- Rochester, New York **ROC**
- Salisbury, Maryland **SBY**
- Salt Lake City, Utah **SLC**
- San Antonio, Texas **SAT**
- San Diego, California **SAN**
- San Francisco, California **SFO**
- San Juan, Puerto Rico **SJU**
- Savannah, Georgia **SAV**
- Seattle/Tacoma, Washington **SEA**
- St. Louis, Missouri **STL**
- St. Thomas-Cyril E., Virgin Islands **STT**
- State College, Pennsylvania **SCE**
- Syracuse, New York **SYR**
- Tampa/St. Petersburg, Florida **TPA**
- Washington, D.C.-Dulles **IAD**
- Washington, D.C.-National **DCA**

- Watertown, New York **ART**
- West Palm Beach, Florida **PBI**
- Wilkes-Barre/Scranton, Pennsylvania **AVP**
- Williamsport, Pennsylvania **IPT**
- Wilmington, North Carolina **ILM**

Non-Stop International Destinations*:

- Amsterdam, Netherlands **AMS**
- Athens, Greece **ATH**
- Barcelona, Spain **BCN**
- Bermuda, Atlantic Ocean **BDA**
- Cancun, Mexico **CUN**
- Doha, Qatar **DOH**
- Dublin, Ireland **DUB**
- Frankfurt, Germany **FRA**
- Freeport, Bahamas **FPO**
- Glasgow, Scotland **GLA**
- Grand Cayman, West Indies **GCM**
- Lisbon, Portugal **LIS**
- London-Heathrow, England **LHR**
- Madrid, Spain **MAD**
- Manchester, England **MAN**
- Montego Bay, Jamaica **MBJ**
- Montreal-Dorval, Canada **YUL**
- Munich, Germany **MUC**
- Nassau, Bahamas **NAS**
- Oranjestad, Aruba **AUA**
- Ottawa, Canada **YOW**
- Paris-De Gaulle, France **CDG**
- Providenciales, Turks & Caicos **PLS**
- Punta Cana, Dominican Rep **PUJ**
- Quebec, Canada **YQB**
- Reykjavik, Iceland **KEF**
- Rome-Da Vinci, Italy **FCO**
- Santo Domingo, Dominican Rep **SDQ**
- Shannon, Ireland **SNN**
- Simpson Bay, Saint Maarten **SXM**
- St. Lucia-Hewanorra, West Indies **UVF**
- Toronto-Pearson, Canada **YYZ**
- Venice-Treviso, Italy **VCE**

*As of December 2017

- *Pennsylvania Destinations*

Passenger Airlines:



Cargo Airlines:



CONNECTING MORE PEOPLE TO MORE PLACES

PHL Airport is thrilled to work with our airline partners to offer more non-stop flights and new service to many of the best destinations worldwide. We are proud to be a premier global gateway, providing more choice and connecting travelers to their vacation destinations, career opportunities and loved ones.

These new flights are opening new doors to Philadelphia — the birthplace of America and the nation's first World Heritage City. Whether soaking in historical attractions, tasting renowned cuisine or cheering on the city's sports teams, Philadelphia is a premier urban destination and was named by *Travel + Leisure* magazine as one of the 50 best places to travel in the world and one of the top seven U.S. destinations.

NEW AIR SERVICES



March 9

Alaska Airlines announces and begins new non-stop service to **San Francisco** in 2017.



March 28

Frontier announces new non-stop flights from PHL to **San Juan**, starting on June 11, 2017.



April 5

Alaska Airlines adds non-stop service to **Los Angeles**, beginning on September 1, 2017.



May 30

Icelandair's inaugural flight takes off to **Reykjavik, Iceland**.



“These new routes will further strengthen our commitment to the Airport and region and also leverage connecting power in the U.S. to feed and develop new markets across the Atlantic.”

OLYMPIA COLASANTE | AMERICAN AIRLINES' VICE PRESIDENT OF PHL HUB OPERATIONS



August 16

American Airlines announces new service to **Zurich** on March 25, 2018, and service to **Budapest** and **Prague** in May 2018.



September 19

Frontier Airlines announces new service to **Charleston, South Carolina**, beginning in February 2018.



September 26

Frontier announces upcoming non-stop seasonal flights in 2018 to **Jacksonville, Madison, Memphis** and **Omaha**.



October 4

American Airlines announces year-round, non-stop flights in 2018 to four new cities: **Des Moines, Madison, Omaha**, and **San Antonio**.



October 4

New carrier Aer Lingus announces service to **Dublin**, beginning service in March 2018.



“For 20 years, the Exhibitions Program
at Philadelphia International Airport
has elevated the best emerging and
professional artists of our region.”

KELLY LEE | CHIEF CULTURAL OFFICER OF THE CITY OF PHILADELPHIA ARTS, CULTURE AND THE CREATIVE ECONOMY

EVA SHELLEY | GLASS

CELEBRATING 20 YEARS OF THE **UNIQUELY PHILADELPHIA** EXHIBITIONS PROGRAM

PHL is proud to share the culture and artwork of the Greater Philadelphia region through its Uniquely Philadelphia Exhibitions Program. Since the program's creation in 1998, PHL has presented more than 425 rotating exhibits, featuring a variety of media, including painting, photography, printmaking, wood working, ceramics, glass and found objects.

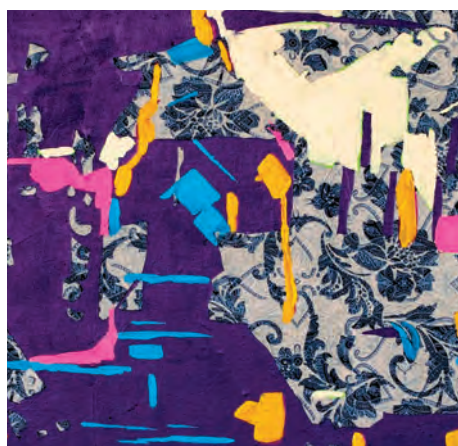
Often coinciding with city-wide events, the exhibits present Philadelphia-centric themes and artwork, such as an exhibit in Terminal A-East recognizing Philadelphia's designation as the nation's first World Heritage City by the International Organization of World Heritage Cities.

PHL collaborates with regional museums and institutions to showcase their collections. Exhibits are shown in both pre- and post-secure areas of the airport, so both the public and travelers can enjoy. PHL Director of Image and Chief Curator Leah Douglas founded this groundbreaking program.

For a full list of upcoming installations, visit PHL.org.



Robert Straight,
A Modern Wilderness (detail)
Paint on wood over stenciled background



Anthony Vega,
Proximity (Philadelphia) (detail)
Print on vinyl



Jennifer Martin, Artist Demonstration



During Autism Awareness Month, a Delta Airlines employee helps to prepare children with autism and their families for traveling through PHL.



PHL's holiday entertainment program features live music from local musicians for passengers to enjoy.



A PHL passenger assistance employee celebrates Flag Day with passengers.



Take Our Children to Work Day is an opportunity to introduce kids to different roles at the Airport, including PHL first responders.



The J.W. Catharine Elementary School choir performs at PHL.

COMMUNITY & COLLABORATION: PHL HAS SOMETHING FOR EVERYONE

PHL values collaboration, partnership and community. Whether it's events, trainings, holiday observances, or passenger mobility and access initiatives, we are constantly innovating our offering of engaging initiatives, large and small, to ensure the Airport has something here for you.



A live caricature artist entertains passengers with hand-drawn pictures as they await flights.



The 2018 PHL Job Fair Readiness Workshop helps to prepare potential employees with interview and job coaching.



PHL CEO Chellie Cameron speaks to a local Chamber of Commerce about the Airport's economic impact.

“Philadelphia International Airport seems destined to be the American Airlines hub to open and develop new international markets, which includes the addition of a new fleet of aircraft that can penetrate markets PHL and the region need.”

NBC10, *“American Airlines Calls PHL Airport ‘The Crown Jewel,’ Priming It for the Future.”*

BUDAPEST, HUNGARY



CELEBRATING PHL'S 2017 MILESTONES

✈ January 19

PHL's Wi-Fi Ranks Among Fastest in U.S. Airports

Seattle-based company Speedtest found that PHL's Wi-Fi download speed — provided by AT&T — was second only to Denver International Airport.

January 31

American Express Announces Centurion Lounge Coming to PHL

PHL is proud to house one of only nine in the world of this exclusive lounge, which offers a complimentary bar and food menu, floor-to-ceiling windows, a private shower suite and quiet workspaces. Travelers will have the chance to try some of the city's best cuisine from star chefs, including Michael Solomonov.



February 10

PHL Celebrates Black History Month with Art Exhibit

Presented in partnership with the African American Museum in Philadelphia, the photo exhibit honored 100 African American history makers of the 20th century with roots in the Philadelphia area.



March 29

Governor Wolf Honors PHL Airport CEO at Female Veterans Day Event

PHL CEO Chellie Cameron joined 27 other female veterans for a ceremony that recognized women who have served in the military for their contribution to Pennsylvania and to the country.



PHL'S ECONOMIC IMPACT

The Airport is a vital economic engine for the region, generating billions of dollars annually and supporting more than 96,000 jobs for the 11-county Philadelphia metropolitan statistical area.



* Total earnings comprises of wages and benefits.

Month of April

PHL CEO Chellie Cameron Launches Chambers of Commerce Speaking Tour to Tout Economic Impact Study

Stops included the Main Line Chamber, New Castle Chamber of Commerce, Northeast Chamber of Commerce and the Chamber of Commerce Southern New Jersey.

"A busy and cost-efficient airport is essential to the health of the regional economy and will help keep Philadelphia competitive. Our non-stop operations to more than 120 destinations connect the region to the rest of the country and the rest of the world, which enable businesses here to thrive and residents to enjoy an enhanced quality of life." **CHELLIE CAMERON**

May 15

PHL Airport Kicks off Infrastructure Week

Former PA Gov. Ed Rendell, co-Chair of Building America's Future, and Kevin Burke, president of Airports Council International — North America, joined Chellie Cameron for an event focused on increasing investment in our nation's airports in order to compete in the 21st century global economy.



April 21

PHL Airport Promotes Bottle-Filling Stations at Earth Day Event

PHL provides bottle-filling stations and water fountains to make it easy for travelers to refill reusable water bottles to save money and protect the environment.



May 16

PHL Hosts Job Fair at Temple University

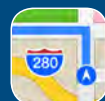
More than 40 businesses, including airlines, restaurants, retailers and government agencies, participated to fill 300 immediate openings.



June 12

Apple Maps App Adds PHL

The indoor maps feature makes it easier for users to locate more than 170 shops, restaurants and eateries, as well as airline gates, services and amenities within PHL; the app offers indoor positioning so users can see where they are within the airport.



July 21

Just Plane Fun Takes Off at PHL Airport

PHL celebrates summer with its annual customer appreciation program, offering free entertainment, activities, prizes, food and beverages for all ages.



May 23

\$900 Million Capital Development Program (CDP) Announced

PHL and American Airlines announced commitment to continue critical improvements and develop new infrastructure at PHL and PNE over the next five to seven years.

August 17

Department of Transportation Awards PHL a Grant for Runway Extension

The nearly \$10.8 million grant was dedicated to the airport's runway extension project and improving portions of the taxiway.

August 26

Runners Take to PHL Runways for Annual 5K

More than 280 runners and walkers participated in the second annual 5K Run on the Runway to raise money for the Eastwick Friends and Neighbors Coalition and Habitat for Humanity Philadelphia.



September 9

PHL Airport Tests Emergency Preparedness with Simulated Aircraft Accident

The 2017 EPEX drill was carefully staged, including the use of medical transport helicopters, to test and evaluate PHL's response to a real-life incident. The test proved PHL is well prepared with a plan that works.



October 6

PHL Hosts Annual Business Opportunity Forum

PHL hosted more than 500 business representatives, including minority, woman-owned and disadvantaged enterprises, to share information about contracting opportunities available at the Airport.

October 16

State-of-the-Art Terminal B Redesign Opens

The \$30 million Terminal B investment — a collaboration between PHL, American Airlines and OTG Management — incorporates cutting-edge technology, chef-driven dining with local flavor, more shopping and a beautiful light-filled design.



November 10

PHL Salutes Veterans and Unveils POW-MIA Chair of Honor

During the annual Veterans Day celebration, PHL unveiled a National Prisoner of War – Missing in Action Chair of Honor in the International Arrivals Hall; PHL also paid tribute to veterans and recognized Airport employees who have served.



Month of December

PHL Celebrates the Holidays with Performing Arts Program

The amazing acrobat Li Liu entertains visitors at PHL as part of the airport's Holiday Entertainment Program.

STRATEGIC GOALS: TOGETHER WE'LL GET YOU THERE

In our endeavor to make PHL the region's airport of choice, we place a high priority on providing the traveling public with safe, clean, modern and convenient air transportation facilities and a wide array of products and services to enable a unique traveling experience. Together, we are proud of the work we are doing today to create a better PHL of the future.

PHL is one of the largest employers in the Philadelphia region. More than 20,000 people work at the Airport. To provide our customers with the best service, we employ the best people in our region who take pride in making PHL the best it can be. Meet two of our PHL employees who enjoy doing their part to ensure a smooth travel experience for our customers.

PHL PRIDE

People
Respect
Integrity
Diversity
Excellence

PHL Goals:

Transform Customer Experience

- Employees
- Passengers
- Stakeholders

Improve Conditions of Current Facilities

- Safety & Security
- Image & Branding
- Operational Efficiency

Build for the Future

- Capital Development
- Diversity
- Sustainability
- Innovation & Excellence

By the Numbers:



Number of Passengers: **29,585,754**



Number Of Operations: **369,928**
(Takeoffs and Landings)



Cargo: **462,736 tons**
(Calendar Year 2016)



The Division of Aviation has over **20,000** badge holders — **900** of whom are city employees.



“It can be very challenging on the airfield and every day is different, but the workers are very dedicated to their jobs, they’re a joy to work with and it’s a joy being around them.”

ANTHONY ALFONSE

AIRPORT PAVEMENT AND GROUNDS SUPERINTENDENT



“I love my job. I’ve been at the airport for 19 years and it’s almost like a family. When I first started, I knew this was going to be the place I would retire.”

WISTERIA HARRIS

DEPARTMENT OF SECURITY AND SYSTEMS TECHNOLOGY CLERK III

PHL FINANCIAL SUMMARY

City of Philadelphia Aviation Fund Statements of Net Position (amounts expressed in millions)

	Fiscal Year 2017	Fiscal Year 2016	Dollar Increase (Decrease)	Percentage Increase (Decrease)
Current assets	\$ 190,463	\$ 146,011	\$ 44,452	30.4%
Non-current assets	442,247	366,119	76,128	20.8%
Capital assets, net	2,030,401	1,990,633	39,768	2.0%
Total assets	2,663,112	2,502,763	160,349	6.4%
Deferred outflows	31,476	49,852	(18,376)	(36.9)%
Current liabilities	410,175	333,781	76,394	22.9%
Non-current liabilities	1,390,498	1,351,094	39,404	2.9%
Total liabilities	1,800,673	1,684,875	115,799	6.9%
Deferred inflows	(170)	1,522	(1,692)	(111.1)%
Net position:				
Net investment in capital assets	788,505	800,301	(11,796)	(1.5)%
Restricted for capital projects	72,395	73,033	(638)	(0.9)%
Restricted for debt service	109,001	77,598	31,403	40.5%
Unrestricted	(75,817)	(84,715)	8,898	(10.5)%
Total net position	\$ 894,084	\$ 866,217	\$ 27,867	3.2%

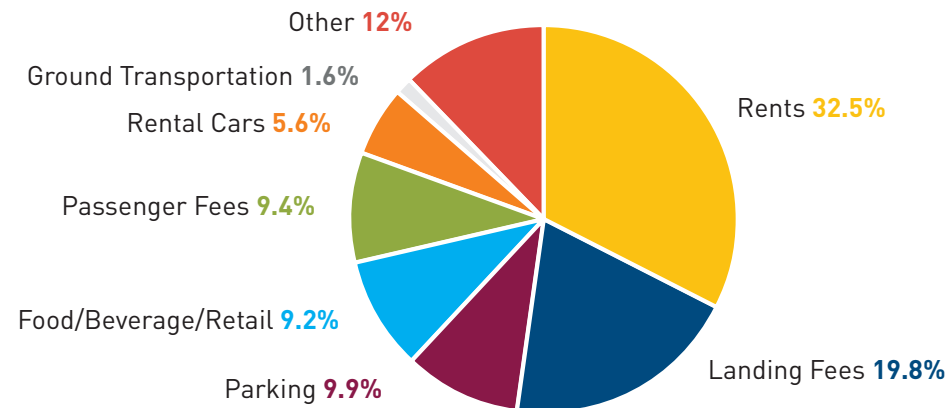
City of Philadelphia Aviation Fund Statements of Revenues, Expenses and Changes in Fund Net Position (amounts expressed in millions)

	Fiscal Year 2017	Fiscal Year 2016	Dollar Increase (Decrease)	Percentage Increase (Decrease)
Operating revenues	\$ 341,621	\$ 340,796	\$ 825	0.2%
Operating expenses	365,461	346,107	19,354	5.6%
Operating loss	(23,840)	(5,311)	(18,529)	348.9%
Non-operating revenue, net	42,141	43,064	(923)	(2.1)%
Income before capital contributions	18,301	37,753	(19,452)	(51.5)%
Capital contributions	9,566	24,204	(14,638)	(60.5)%
Changes in net position	27,867	61,957	(34,090)	(55.0)%
Net position beginning of year	866,217	804,260	61,957	7.7%
Net position end of year	\$ 894,084	\$ 866,217	\$ 27,867	3.2%

Revenues by Source (\$000)

	Fiscal Year 2017	Fiscal Year 2016	Dollar Increase (Decrease)	Percentage Increase (Decrease)
Operating revenues				
Rents	\$ 111,100	\$ 107,505	\$ 3,595	3.3%
Landing fees	67,710	71,796	(4,086)	(5.7)%
Passenger fees	32,018	33,928	(1,910)	(5.6)%
Parking	33,895	29,965	3,930	13.1%
Food/beverage/retail	31,458	35,971	(4,513)	(12.5)%
Rental cars	19,037	18,925	112	0.6%
Ground transportation	5,590	2,540	3,050	120.1%
Other	40,813	40,167	646	1.6%
Total operating revenue	341,621	340,797	824	0.2%
Non-operating revenue				
Passenger facility charges	59,385	60,920	(1,535)	(2.5)%
Customer facility charges	30,875	31,935	(1,060)	(3.3)%
Interest Income	3,786	2,658	1,128	42.4%
Operating grants	2,488	1,621	867	53.5%
Total non-operating revenue	96,534	97,134	(600)	(0.6)%
Total revenue	\$ 438,155	\$ 437,931	\$ 224	0.1%

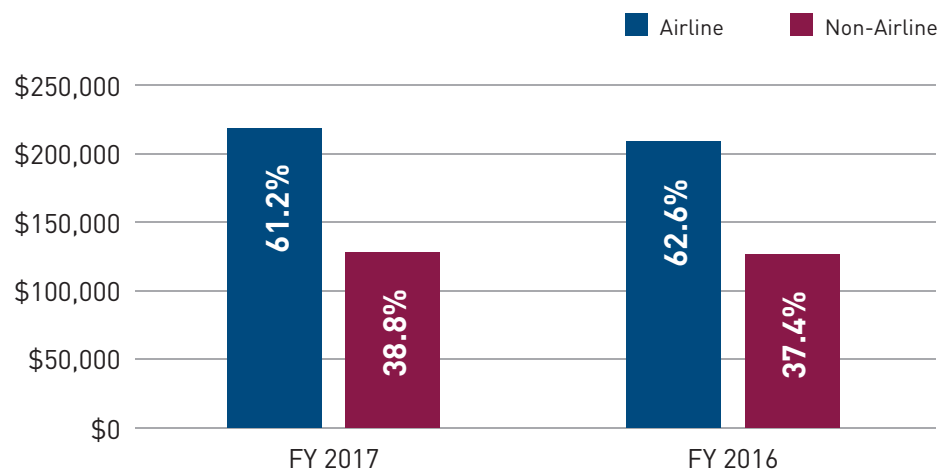
Operating Revenue FY 2017 - \$341.6M



Expenses by Source (\$000)

	Fiscal Year 2017	Fiscal Year 2016	Dollar Increase (Decrease)	Percentage Increase (Decrease)
Operating revenues				
Personnel services	\$ 73,776	\$ 69,283	\$ 4,493	6.5%
Employee benefits	61,940	57,855	4,085	7.1%
Purchase of services	118,283	108,419	9,864	9.1%
Materials & supplies/equipment	5,156	6,945	(1,789)	(25.8)%
Other operating	5,197	1,696	3,501	206.4%
Depreciation	101,109	101,909	(800)	(0.8)%
Total operating revenue	365,461	346,107	19,354	5.6%
Non-operating revenue				
Debt service interest	54,271	54,003	268	0.5%
Other non-operating	123	67	56	83.6%
Total non-operating expenses	54,394	54,070	324	0.6%
Total revenue	\$ 419,855	\$ 400,177	\$ 19,678	4.9%

Operating Revenue (\$000)







PHL PNE

PHILADELPHIA INTERNATIONAL AIRPORT
NORTHEAST PHILADELPHIA AIRPORT

phl.org | [#ProudlyPHL](https://twitter.com/ProudlyPHL)

