



Philadelphia International Airport (PHL) Northeast Philadelphia Airport (PNE)

Nicole Maddox

Assistant Director Air Service
Development and Cargo Services

August 27, 2024



City of Philadelphia,
Department of Aviation



PHILADELPHIA INTERNATIONAL AIRPORT
NORTHEAST PHILADELPHIA AIRPORT



Department of Aviation's Commercial – Cargo Services



PHL PNE

PHILADELPHIA INTERNATIONAL AIRPORT
NORTHEAST PHILADELPHIA AIRPORT

Overview



The **Cargo Services Team** is developing an innovative cargo program at PHL to establish the airport as the preferred choice for speed, efficiency, and quality. Our approach to building out cargo infrastructure at PHL is comprehensive, focusing not only on revenue generation but also understanding and meeting the specific needs of PHL's catchment area.

Cargo Services Team



Nicole Maddox

Asst Director
Air Service Development
& Cargo Services



Larry Allen

Program Manager
Cargo Development



Joshua Karl

Cargo Project
Manager

Core Functions



Land and Service Development

Collaborating with internal and external stakeholders to advance critical cargo infrastructure and land development. Building a cargo ecosystem designed to attract and retain business.

Program Development

Focusing the cargo strategy to ensure an optimal mix of businesses that address current and future cargo demands, with an emphasis on sustainability and other key industry initiatives. Identifying tools and technologies that may improve operations.

Business Development

Promoting PHL cargo brand to attract new carriers to PHL which supports business growth in the region. Facilitate business development functions by attending conferences and building partnerships.

Stakeholder Management

To remain actively engaged with our stakeholders and stay attuned to their needs, continually seeking further opportunities to foster stronger relationships through deeper engagement.

Impact on the Department of Aviation's Mission & Vision



Vision Mission

We are a World Class Global Gateway of Choice

Proudly Connecting Philadelphia with the World

Reputation



Establish PHL as the premier airport for speed, efficiency, and quality

Relationship



Strengthen partnerships with stakeholders to advance the region's economic development

Revenue

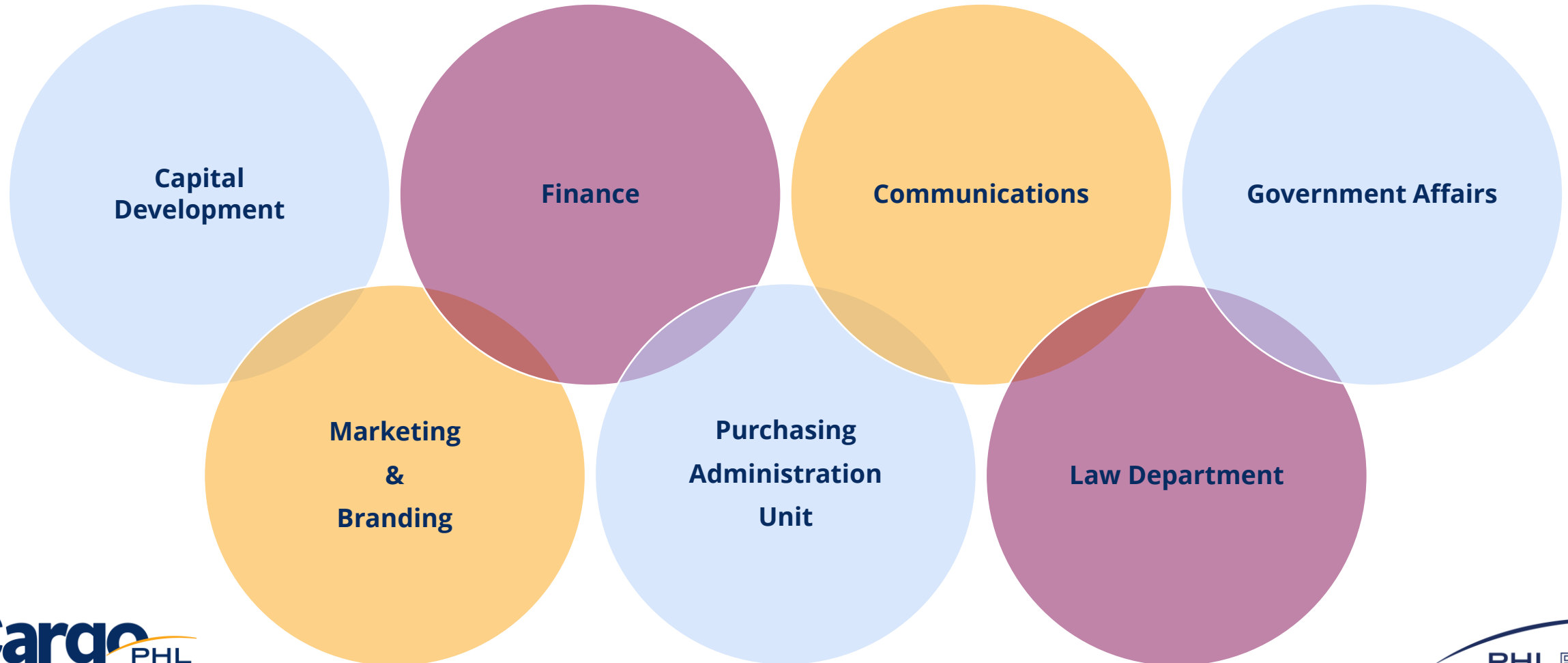


Increase revenue by investing in state-of-art infrastructure and advanced technology to expand cargo operations

Collaboration



Who do we collaborate with EVERYONE





Foundation for Success



PHL PNE

PHILADELPHIA INTERNATIONAL AIRPORT
NORTHEAST PHILADELPHIA AIRPORT

Relationships



PHL Air Cargo Council (PACC)

- Established 2020
 - Community of regional cargo stakeholders
 - Share airport strategy
 - Received input from the community
 - Create win-win partnerships for members



U.S. Customs and
Border Protection



American Airlines



Transportation
Security
Administration

FedEx



Reputation



Air Cargo Community System

- Designed by Kale Logistics to meet the unique cargo demands of PHL

5. Create logistics e-marketplaces

Provide an electronic marketplace for stakeholders to buy and sell logistics services

2. Link the ACCS to regulatory single window

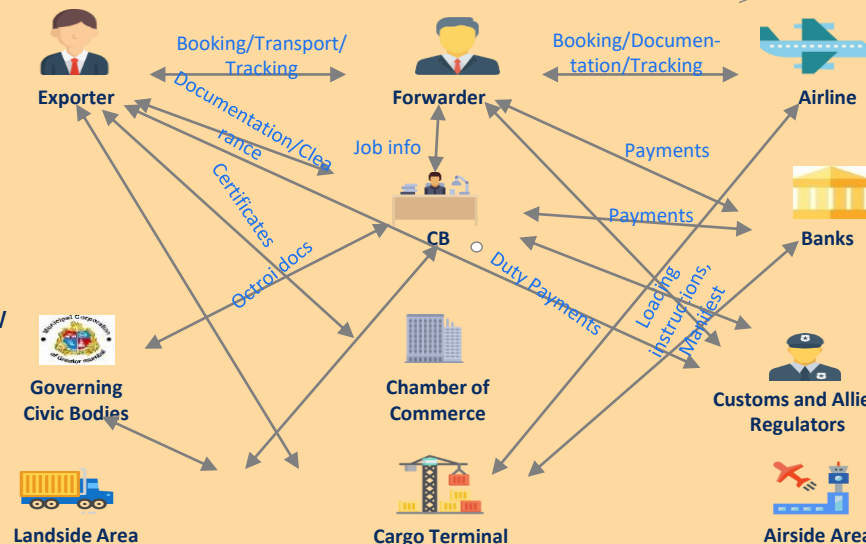
Connect ACCS to governments' single window systems

4. Create digital corridors

Link the ACCS to other airports to grow trade lanes

3. Create an intermodal digital highway

Create a single window between air, road, rail and sea freight



1. Create an Airport Cargo Community System (ACCS)

Common digital platform for airport air cargo stakeholders

Reputation



Marketing to increase awareness of PHL's cargo capabilities, economic strengths and location benefits



Cargo PHL
Precision in Every Step,
Peace of Mind with Every Journey.

PHL Elevates Pharma Logistics with Smart Solutions

- Air Cargo Community System**
Enhancing communication, while increasing efficiency and transparency.
- Sustainability**
Utilizing eGSE to reduce carbon emissions, along with queuing solutions to reduce congestion.
- Cool Port**
Introducing a 241,000 square foot climate-controlled facility that will offer broad cooler and freezer temperatures and the flexibility to accommodate a variety of cargo.

Learn More at phl.org/cargo



Cargo PHL
PHL IS LEADING THE WAY IN NEXT-GEN CARGO INFRASTRUCTURE

PHL's cargo service infrastructure development plan is the most ambitious of any airport in the Eastern United States. With industry experience of partners Kale Logistics, Menzies Aviation and SASI Worldwide, PHL is prioritizing efficiency and sustainability with state-of-the-art technology.

Air Cargo Community System (ACCS)

Kale Logistics is bringing the ACCS to connect the PHL Cargo community both near and far. Kale's tried-and-true truck queuing solution will lower carbon emissions and reduce traffic congestion.


Electric GSE

Menzies Aviation, a recent addition to the ground handling mix at PHL, has a global reach and utilizes electric ground handling equipment. Menzies' strong sustainability initiatives make them a perfect match for PHL.

Smart Cargo Airports


SASI Worldwide is bringing the just-launched Smart Cargo Airport technology to PHL. This product ties together the latest technological, environmental, regulatory, and operational elements. Speed, transparency, quality, and compliance are at its' core, and will only further ensure PHL's Cargo operations lead the industry in efficiency.

Learn More at phl.org/cargo



Cargo PHL
A LOOK AT PHL's \$1.3 BILLION TRANSFORMATION

PHL has embarked on a comprehensive \$1.3 billion capital improvement program, which includes a dedicated cargo development strategy. Through this program, and in strategic partnership with industry experts, PHL is constructing state-of-the-art cargo facilities and harnessing technology to enhance both efficiency and sustainability.



- North of West Apron plans include:**
 - 150,000 sq ft cargo handling facility
 - Dedicated aircraft parking apron
 - Air Cargo Community System by Kale
- West Cargo plans include:**
 - 138 acres dedicated exclusively to cargo infrastructure expansion
 - Capacity for over 1 million sq ft of cargo handling facilities
- Northeast Apron plans include:**
 - 75,000 sq ft airline support facility featuring GSE maintenance, belly cargo handling capabilities, and airline warehousing
 - Two bay hangar
 - Parking Apron

Heilwell plans include:

- 281,000 square foot state-of-the-art cargo facility including 241,000 square feet of cold storage warehouse space
- Capacity to store time-sensitive pharma, life science, perishables, and specialized electronics cargo
- Immediate connectivity to PHL, Interstate 95,
- Convenient access to Port of Philadelphia.

Learn More at phl.org/cargo

Revenue



PHL Cool Port

- Partnership with Bristol and SPR for the development of a 261,202 square foot state-of-the-art cold storage logistic facility. The facility will feature a **241,000 square feet of climate-controlled warehouse space** to provide broad cooler and freezer temperature flexibility to accommodate a variety of cold cargo.



Revenue



Northwest Cargo Facility

- Partnership with AFCO for the development of a **150,000 square foot cargo terminal**. It will feature an **Air Cargo Community System designed by Kale**. The facility is adjacent to the new 520,000 square foot aircraft parking ramp. Completed in Fall of 2022 with five aircraft parking positions.



Revenue



West Cargo

- 136 Acres dedicated to cargo expansion and infrastructure development. The site will support an estimated 1 million square foot cargo facility with superior airfield connectivity for cargo operations and a proposed 20 aircraft parking position.



Cargo Enabling Projects



- Northeast Aviation Development (NEAD)
- Acquisition of the Liquor Control Board (LCB) Site
- Repositioning of Tinicum Island Road
- I-95 Slip Ramp
- FDR Park (Wetland Mitigation)



Aspirations

PHL PNE

PHILADELPHIA INTERNATIONAL AIRPORT
NORTHEAST PHILADELPHIA AIRPORT

Positioning PHL at the Cargo Table



- ACI Air Cargo Committee
- TIACA (The International Air Cargo Association)
- ACHL (Air Cargo Handling Logistic)
- CAA (Cargo Airline Association)

Aspirations



- To become the cargo airport of **Choice** in the Northeast Corridor
- The **Aviation** champion of intermodal cargo in Philadelphia
- Expand and diversify PHL's **Revenue** portfolio
- Drive the expansion of our international **Gateways**
- Generate **Opportunities** for our stakeholders and the region

View the video and more information at: <https://www.phl.org/cargo>

