



Philadelphia International Airport (PHL) Northeast Philadelphia Airport (PNE)

Trisha Grace

Airport Environmental Services Mgr

September 26, 2024



City of Philadelphia,
Department of Aviation



PHILADELPHIA INTERNATIONAL AIRPORT
NORTHEAST PHILADELPHIA AIRPORT



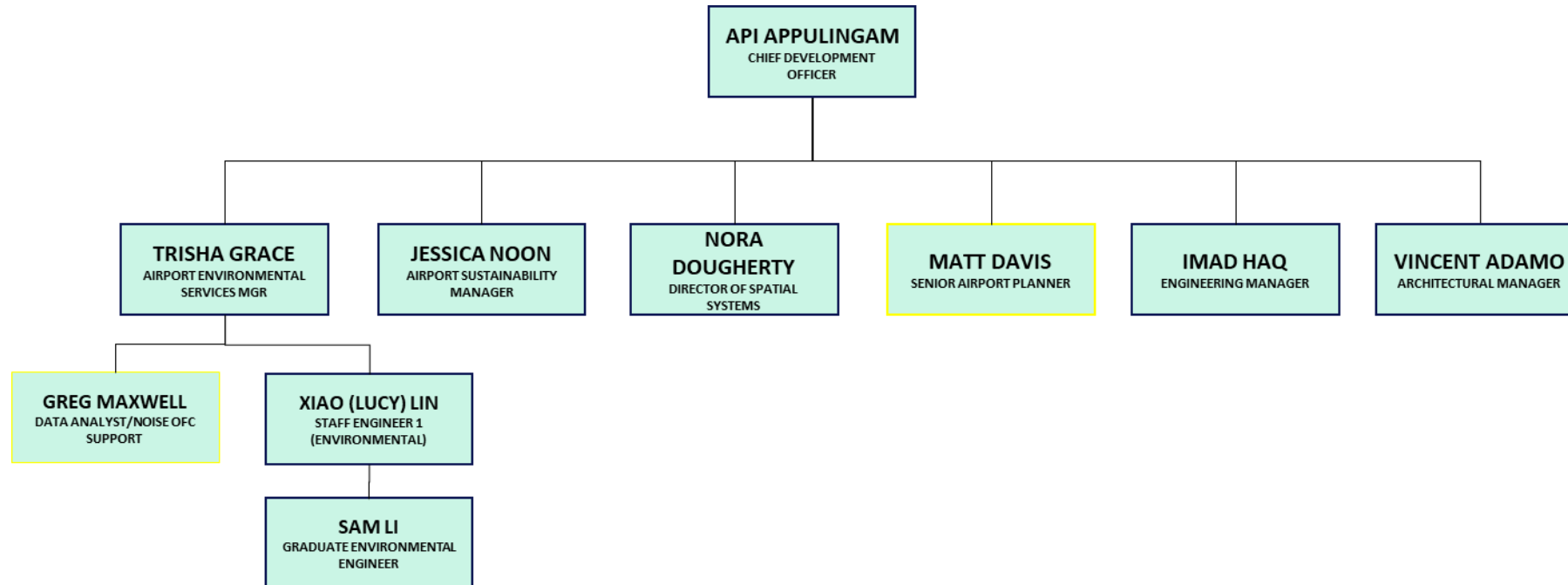
Department of Aviation's Environmental Services



PHL PNE

PHILADELPHIA INTERNATIONAL AIRPORT
NORTHEAST PHILADELPHIA AIRPORT

Environmental Services Unit



Environmental Services Unit



Lucy Lin

- Over 7 yrs w DOA
- Drexel Grad, Chemical Eng
- Co-op w PWD



Sam Li

- 6 months w DOA
- Drexel Grad, Chemical Eng
- Co-op w PWD



Greg Maxwell

- Over 17 yrs exp in Aviation Noise

Overview



Environmental Services at the airport revolve around:

- Reducing negative impacts on the natural environment
- Minimizing pollution
- Conserving resources
- Protecting ecosystems

Overview



- Asbestos Management (testing and monitoring)
- Air Quality monitoring and permitting
- Spill Emergency Response and Reporting
- Resource Conservation and Recovery Act inspections (weekly)
- Spill Prevention, Control & Countermeasure Inspections (monthly)
- Preparedness, Prevention and Contingency (PPC) Plan
- UST/AST permitting and monitoring
- Wetlands Delineation
- Stormwater NPDES Permitting – Industrial Stormwater & Construction
- NEPA actions – Categorical Exclusion/Environmental Assessment/Enviro. Impact Statement
- Soil and Groundwater sampling and analysis
- Water Quality testing
- Act 2 (Brownfields)
- Noise

Overview



- Asbestos Management
 - Asbestos is a naturally occurring fibrous silicate mineral that is a good thermal & electrical insulator and is highly fire resistant
 - Prior to the late 1980's was a commonly used building material (drywall, joint compound, plaster, floor tiles, mastic, roofing, window caulk, fireproofing, thermal pipe insulation, etc.)
 - Setup material testing, monitoring, assist with cost estimates for remediation



Overview



- Spill Emergency Response and Reporting
 - Maintain spill notification procedures of regulated substances (fuel, hydraulic fluids, etc)
 - Reporting to PADEP/National Response Center depends on qty and storm drain impact
 - Filing Discharge Monitoring Report including monthly spill data to PADEP
- Resource Conservation and Recovery Act inspections (weekly)
 - RCRA law gives EPA the authority to control hazardous waste from the “cradle to grave”
 - Inspections of DOA hazardous & universal waste areas to ensure compliance with the law

UNIVERSAL WASTE	
SHIPPER	_____
ADDRESS	_____
CITY, STATE, ZIP	_____
CONTENTS	_____

ACCUMULATION START DATE	_____

Overview



- Spill Prevention, Control & Countermeasure Rule
 - Required under federal Oil Pollution Control Act
 - Help prevent discharge of oil into navigable waters and adjoining shorelines
 - Develop, maintain and implement an SPCC Plan
 - Monthly inspections of DOA areas (FLV3, SAT, etc) to check on UST/AST leak detection measures, etc
- Preparedness, Prevention and Contingency (PPC) Plan
 - State requirement to prepare and implement plan for facilities that have a Strmwtr Discharge Permit and/or generates, recycles or stores hazardous waste
 - Unique to PA
 - Airport-wide plan documenting “who, what, where, and how much” of haz materials and responsible parties
- UST/AST permitting and monitoring
 - Annual permitting with DEP
 - Tank closures

Overview



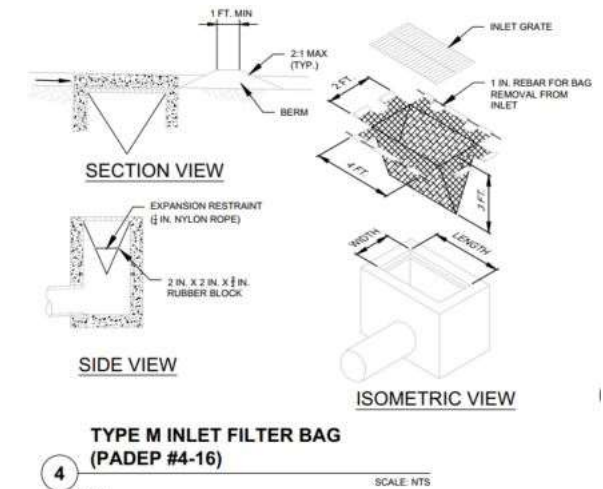
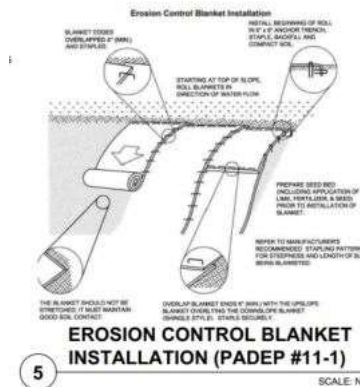
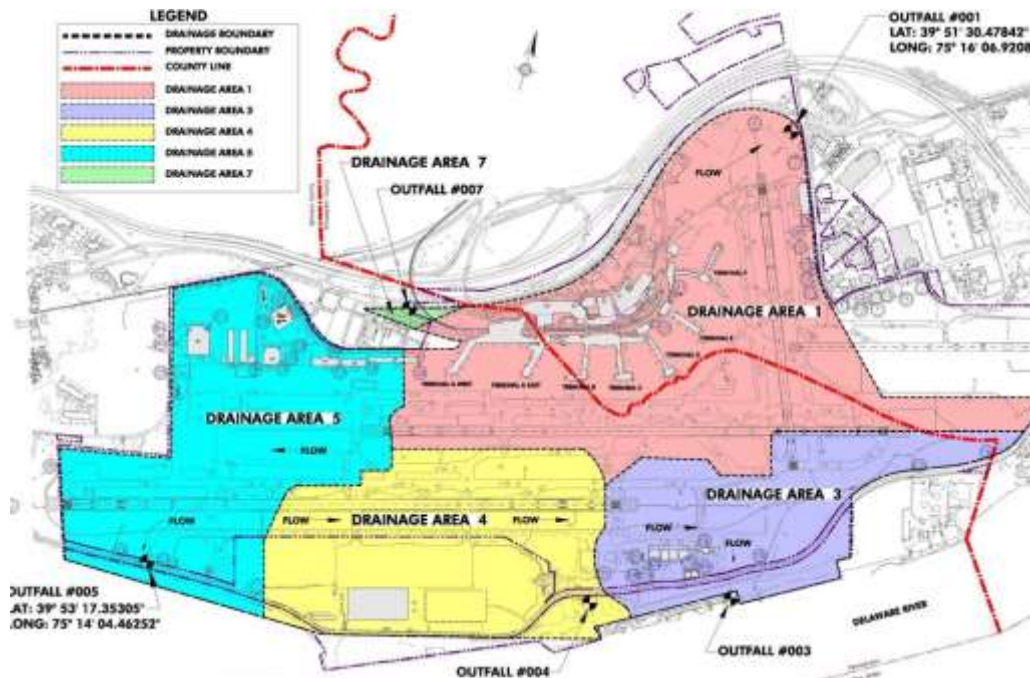
- Wetlands Delineation
 - Delineation and survey of wetlands and waterways (hydrophytic veg, hydric soils, wetland hydrology)
 - 5 yr Jurisdictional Determination Renewal from USACoE



Overview



- Stormwater NPDES Permitting – Industrial Stormwater & Construction
 - Industrial permit covers our drainage activities related to deicing/defrosting
 - Monthly testing of outfalls and reporting to DEP
 - Construction permit covers E&S and Post Construction Strmwtr Management



Overview



- National Environmental Policy Act

- Cornerstone of environmental protection in the US, guiding the development of environmentally sound projects
- FAA determines if NEPA applies and the appropriate level of review

- Categorical Exclusion – excluded from detailed environmental analysis when the action normally does not have a significant effect on human environment.
- Environmental Assessment/Finding of No Significant Impact – determines whether or not the action has the potential to cause significant environmental effects.
- Environmental Impact Statements – prepared when a proposed major action is determined to significantly affect the quality of the human environment

DEPARTMENT OF TRANSPORTATION FEDERAL AVIATION ADMINISTRATION

FINDING OF NO SIGNIFICANT IMPACT (FONSI)/RECORD OF DECISION (ROD)

Project

Philadelphia International Airport, West Cargo Redevelopment and Expansion Plan.

Location

Philadelphia International Airport (PHL), Philadelphia, Pennsylvania.

Introduction

This Finding of No Significant Impact/Record of Decision (FONSI/ROD) sets out the Federal Aviation Administration's (FAA) consideration of environmental and other factors for Airport Layout Plan (ALP) approval for the West Cargo Redevelopment and Expansion Plan project proposed at the Philadelphia International Airport (PHL) by the City of Philadelphia, the airport sponsor. The FAA arrived at the determinations and approvals presented in this FONSI/ROD by considering public comments and reviewing the environmental analysis in the *West Cargo Redevelopment and Expansion Plan (EA)*, dated February 2021, which is hereby incorporated into this document by reference, along with all appendices.

The FAA must comply with the National Environmental Policy Act of 1969 (NEPA) before taking federal actions that allow for the implementation of the proposed project. The FAA supervised preparation of the aforementioned EA in accordance with Title 40, Code of Federal Regulation (CFR) § 1501.3 of the *Council on Environmental Quality Regulations (CEQ) for Implementing the Procedural Provisions of the National Environmental Policy Act*. The EA was prepared in accordance with the requirements of NEPA as discussed in FAA Order 5050.4B, *National Environmental Policy Act (NEPA) Implementing Instructions for Airport Actions*, 1050.1F, *Environmental Impacts: Policies and Procedures*, and the FAA's *Environmental Desk Reference for Airport Actions*. The CEQ updated the implementing regulations for NEPA in September 2020. However, the FAA elected to complete this NEPA review under the prior regulation, as authorized by 40 CFR 1506.13, as the EA was underway when the new regulations were enacted.

ARP SOP No. 5.1

Effective Date: June 2, 2017

APPENDIX A. DOCUMENTED CATEx

Airport sponsors may use this form for projects eligible for a categorical exclusion (CATEx) that have greater potential for extraordinary circumstances or that otherwise require additional documentation, as described in the Environmental Orders (FAA Order 1050.1F and FAA Order 5050.4B).

To request a CATEx determination from the FAA, the sponsor should review potentially affected environmental resources, review the requirements of the applicable special purpose laws, and **consult with the Airports District Office or Regional Airports Division Office staff** about the type of information needed. The form and supporting documentation should be completed in accordance with the provisions of FAA Order 5050.4B, paragraph 302b, and submitted to the appropriate FAA Airports District/Division Office. The CATEx cannot be approved until all information/documentation is received and all requirements have been fulfilled.

Name of Airport, LOC ID, and location:

Philadelphia International Airport, PHL, 8000 Essington Avenue, Philadelphia, PA 19153

Project Title:

Rehabilitation of Taxiway E

Give a brief, but complete description of the proposed project, including all project components, justification, estimated start date, and duration of the project. Include connected actions necessary to implement the proposed project (including but not limited to moving NAVAIDs, change in flight procedures, haul routes, new material or expanded material sources, staging or disposal areas). Attach a sketch or plan of the proposed project. Photos can also be helpful.

Overview



- Soil and Groundwater sampling and analysis
 - Conduct fill classification determinations via EDD and/or testing
- Water Quality testing
 - Quarterly testing of gate water cabinets
 - Periodic testing of pooled water to determine source
- Air Quality
 - Maintain operating permits with Air Management Services for boilers/heaters and generators
 - Setup air quality testing and monitoring services as needed

Overview



- Noise Office

- Monitors noise and works with our neighbors, FAA and aircraft operators to minimize noise impacts
- Tracks all aircraft operations at PHL and PNE, monitors times, paths, aircraft types, runways used & atypical flight operations
- Responds to noise related complaints
- Fly Quiet program established in 2012 – educates pilots on noise-sensitive areas & flight routes that can reduce noise for residential communities
- Part 150 Noise Compatibility Study:
 - Noise Exposure Maps & Noise Compatibility Program
 - Voluntary study with the goals to increase the public's awareness of airport operations as well as taking steps to reduce the impact of aircraft overflights on noise-sensitive areas around an airport
 - PHL completed its 1st Part 150 Study in 2002
 - Updated the Study in 2012 due to airspace changes & facility mods

Impact on the Department of Aviation's Mission & Vision



Vision

We are a World Class Global Gateway of Choice

Mission

Proudly Connecting Philadelphia with the World

The Environmental Services Unit helps DOA implement NEPA and other environment laws & regulations enabling others to focus and advance projects and initiatives in furthering our vision of being a World Class Global Gateway of Choice.

Collaboration



Share your unit's collaboration network:

Engineering, Sustainability, Planning, Spatial Services, Finance, Law, Operations, Facilities Maintenance, Custodial Services, Commercial, IT, Purchasing Admin, Budget, Engine 78

Health, Water, Streets, Parks & Rec

PADEP, PennDOT

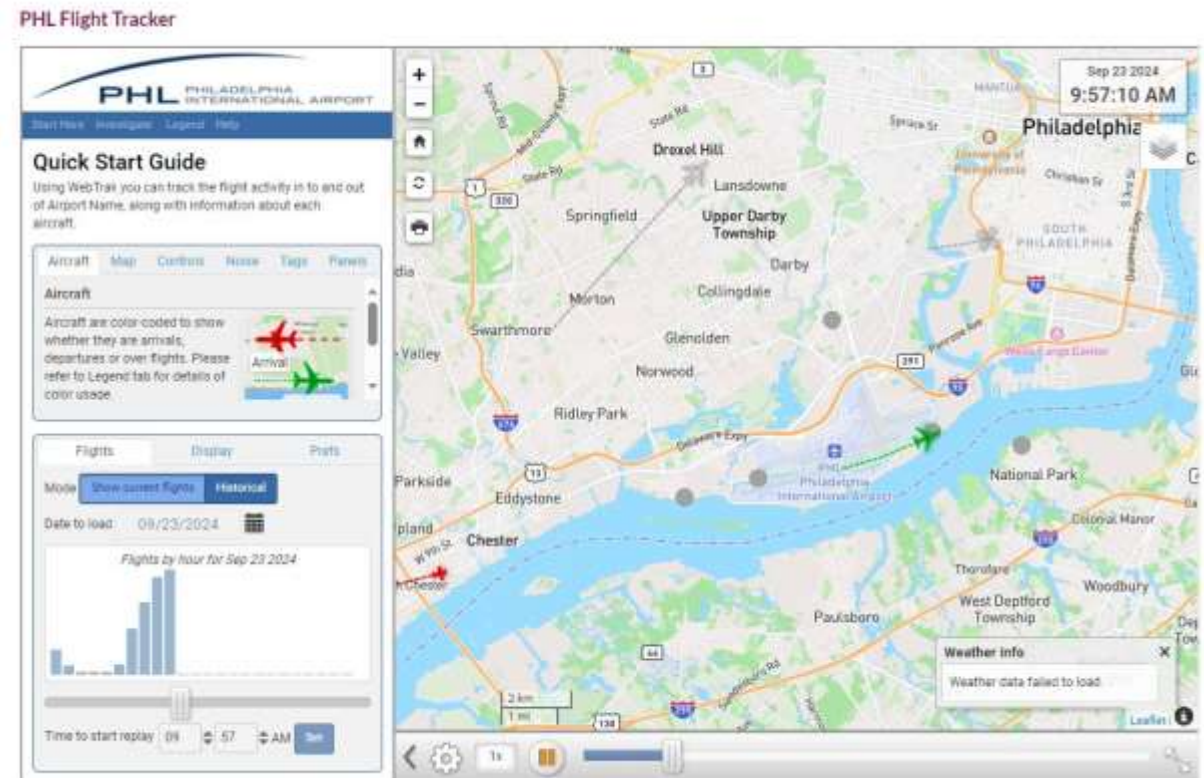
FAA, EPA, USACoE, Coast Guard

Successes



Update of PHL's Noise Office webpage

- User friendly online option to file a noise complaint
- Expanded information regarding noise regulations, Fly Quiet, FAQs
- Flight Tracker



Aspirations



Share your unit's goals:

Improve and provide a more user friendly guidance plan for managing fill onsite



Thank You!

Trisha Grace



City of Philadelphia,
Department of Aviation



PHILADELPHIA INTERNATIONAL AIRPORT
NORTHEAST PHILADELPHIA AIRPORT