

# PHL Cargo Expansion Strategy



**Nonstop PHL**

City of Philadelphia  
Department of Commerce – Division of Aviation

LD-118



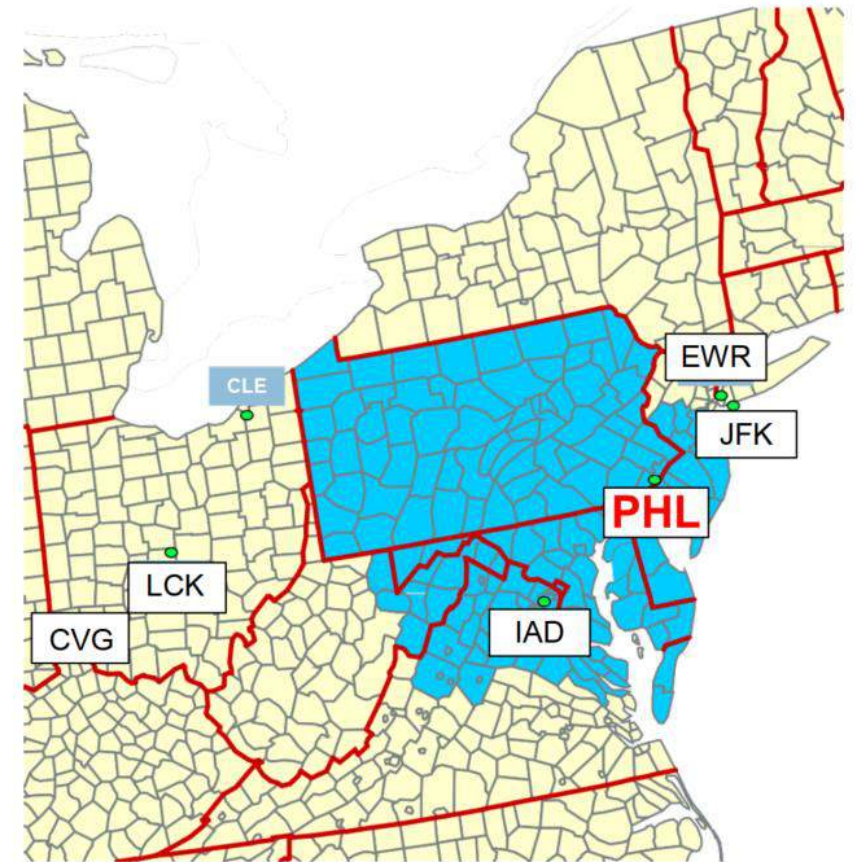


# Opportunity at PHL

**Nonstop PHL**

# Untapped Potential in the Region

- **\$53 billion** in air cargo volume in the PHL catchment area
- PHL's core catchment area encompasses all or parts of 6 states
- PHL captures only **9% of the catchment area market share**
  - **Nearly 60% of the share passed us by**, and was captured by neighboring airports **JFK, EWR and IAD**
- “Leakage” is due in part to **capacity limitations at PHL**.
- **Upgrades in capacity** lead to more efficient operations for many of our region's industries, **keeping them competitive**:
  - Local and regional companies **can save significant time and expense** by using new cargo handling capabilities at PHL.





# Existing Cargo Facilities at PHL

**Nonstop PHL**

# Existing Cargo Facilities

**C8**

**74,460 sqft | Owner: AeroTerm |  
Tenant: AeroTerm**

*Subtenants*

FedEx | Delta Airlines | Vacant  
Transportation Security  
Administration

**C7**

**103,114 sqft | Owner: AeroTerm |  
Tenant: AeroTerm**

*Subtenants*

FedEx | American Airlines  
Worldwide Flight Services (Delta  
Cargo, British Airways Cargo, Qatar  
Cargo, Alaska Cargo)

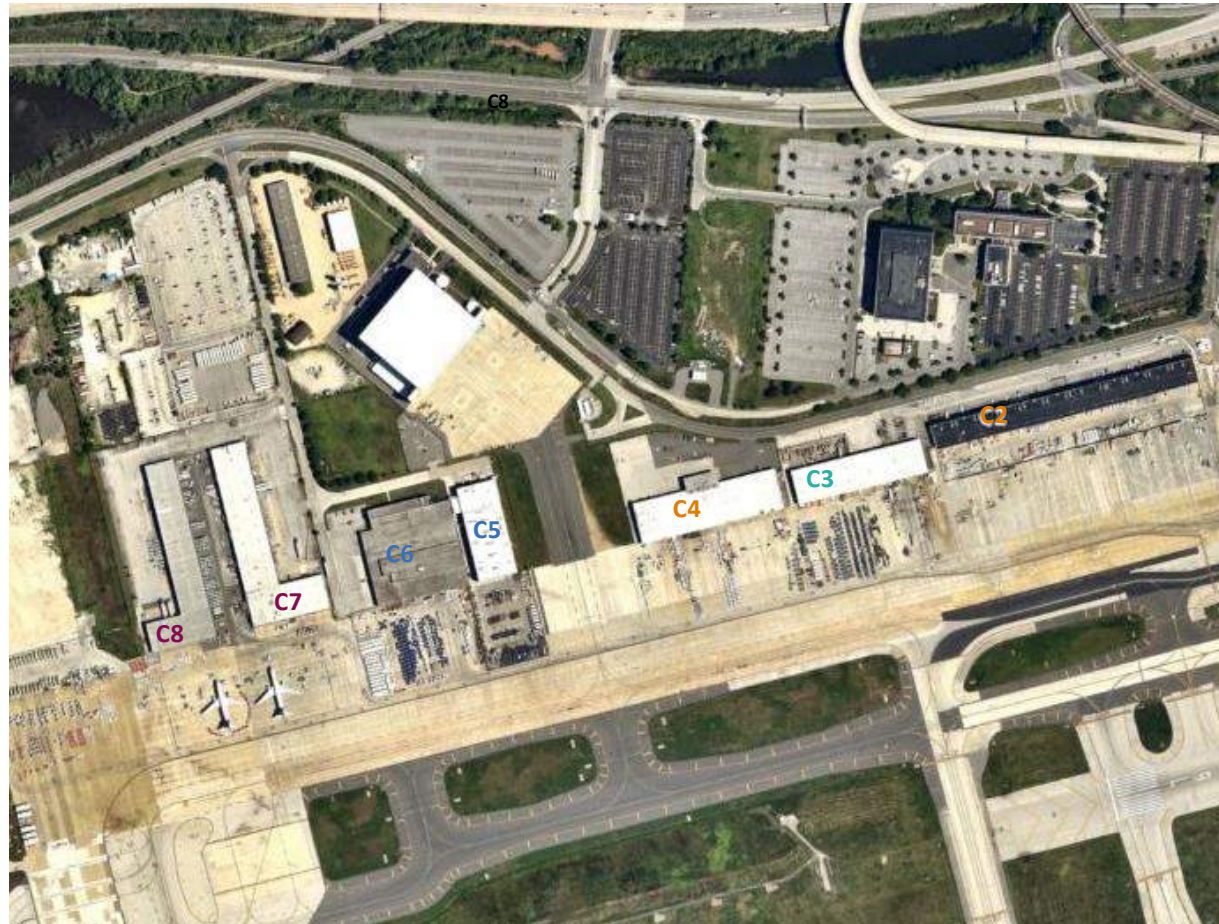
**C6**

**103,000 sqft | Owner: American  
Airlines | Tenant: American Airlines**

**C5**

**57,220 sqft | Owner: American  
Airlines | Tenant: American Airlines**

## PHL CARGO CITY BUILDINGS



**C4**

**69,354 sqft | Owner: City | Tenant:  
American Airlines | United Airlines**

*Subtenants*

American Airlines  
Worldwide Flight Services (United  
Cargo, Lufthansa Cargo)

**C3**

**108,420 sqft | Owner: Ridgely |  
Tenant: American Airlines**

*Subtenants*

American Airlines  
Skytanking North America

**C2**

**83,899 sqft | Owner: City | Tenant:  
Prologis**

*Subtenants*

Prologis | American Airlines  
Manzies | First Transit  
Southwest Airlines | Dnata  
STS Line Maintenance  
AP Construction  
Accufleet International  
US Aviation | US Customs

# Airlines at PHL with Cargo Capabilities



American Airlines

**FedEx**

BRITISH  
AIRWAYS



AIR CANADA 

  
**QATAR**  
AIRWAYS القطرية

 **Lufthansa**

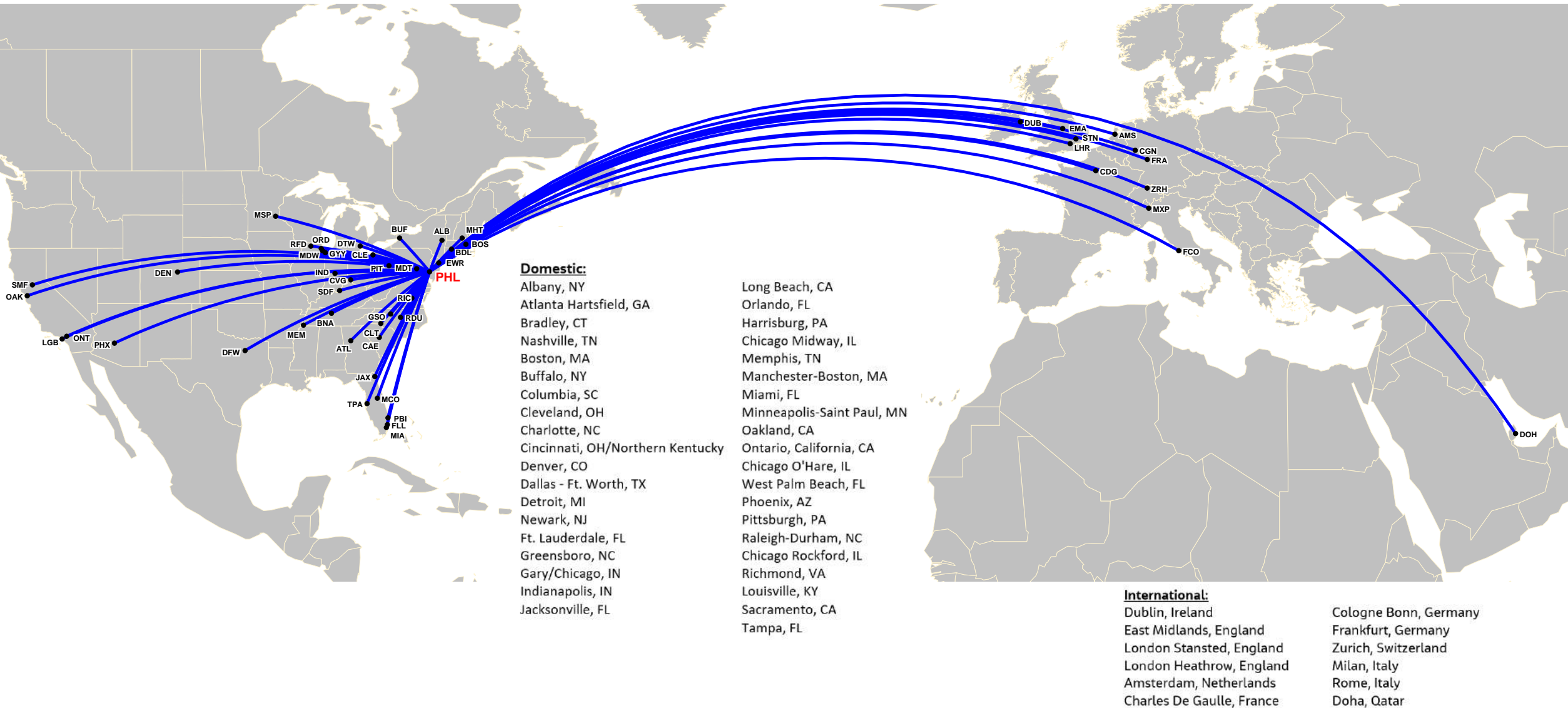
*Alaska*  
AIRLINES

**Southwest** 

**UNITED** 

  
LAND, SEA, AIR, WE GET IT THERE!

# Existing Cargo Destinations





# PHL Action Plan

**Nonstop PHL**



# PHL Will Become the Premier Cargo Airport on the East Coast with Three Focus Areas



Generate revenues  
through increased  
cargo activity

● REVENUE



Enhance the  
reputation of PHL  
as the airport of choice  
for speed, efficiency,  
& quality

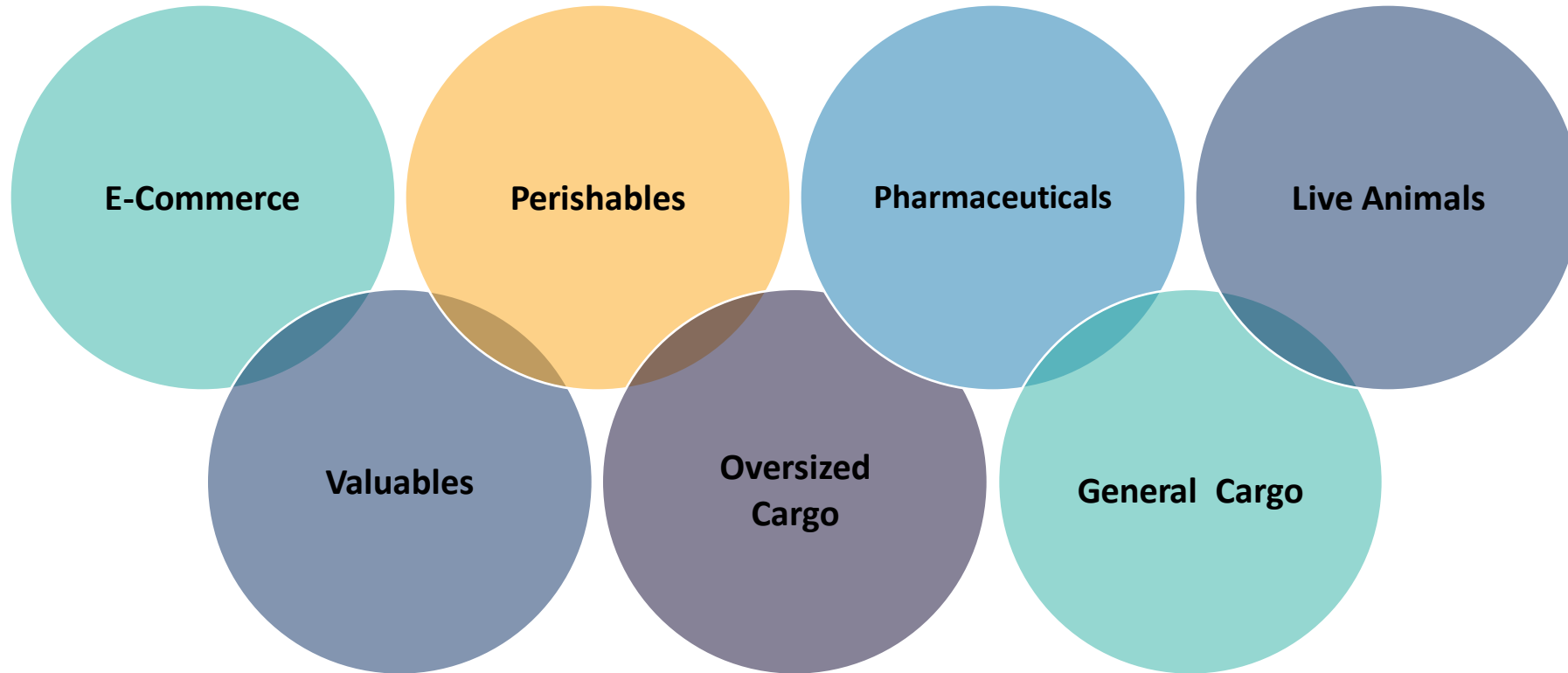
● REPUTATION



Leverage  
relationships with  
stakeholders to  
facilitate economic  
development of the  
region

● RELATIONSHIPS

# Niche Market: Focus Segments



# C2 -New Partnership with AFCO

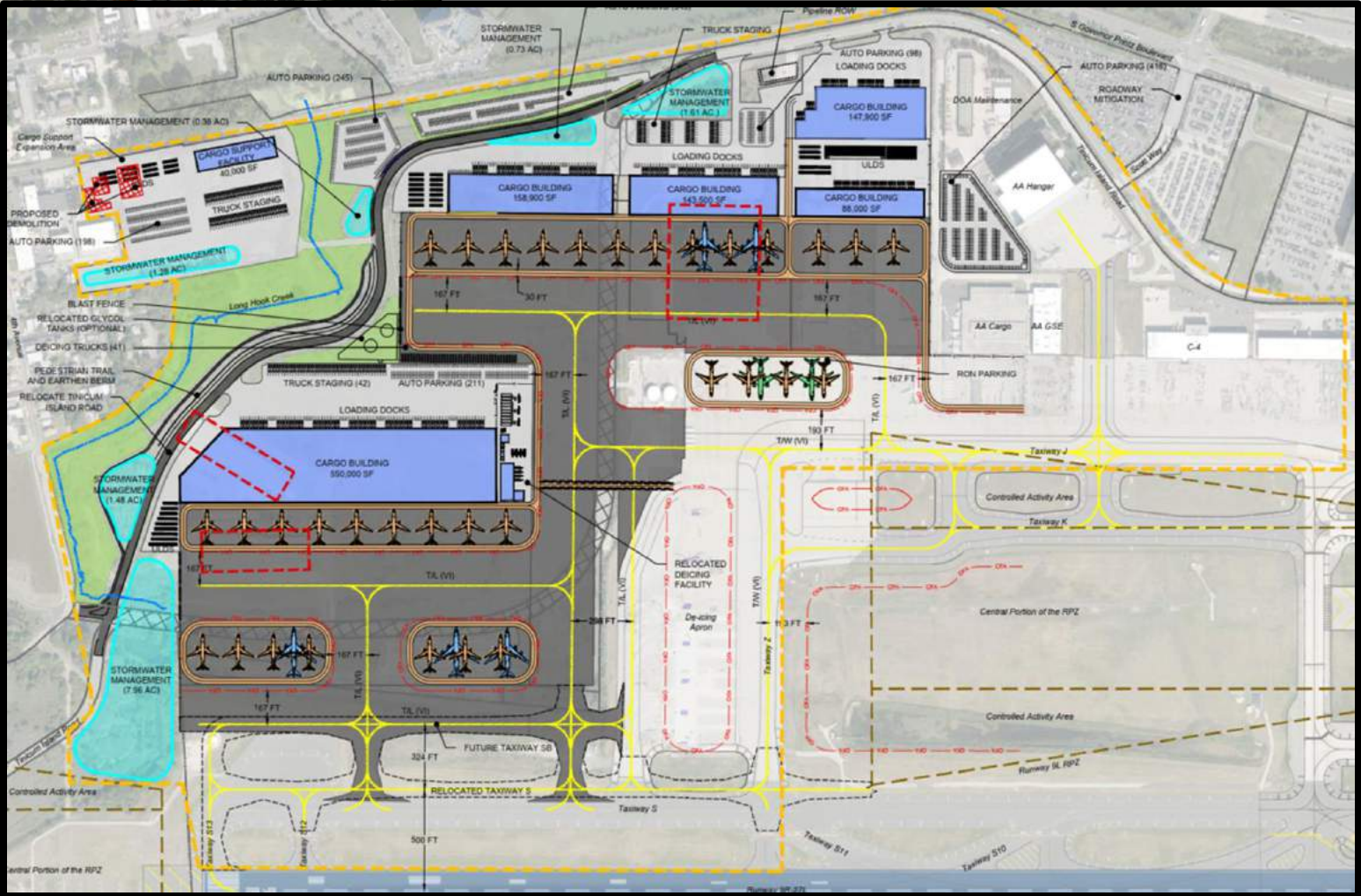
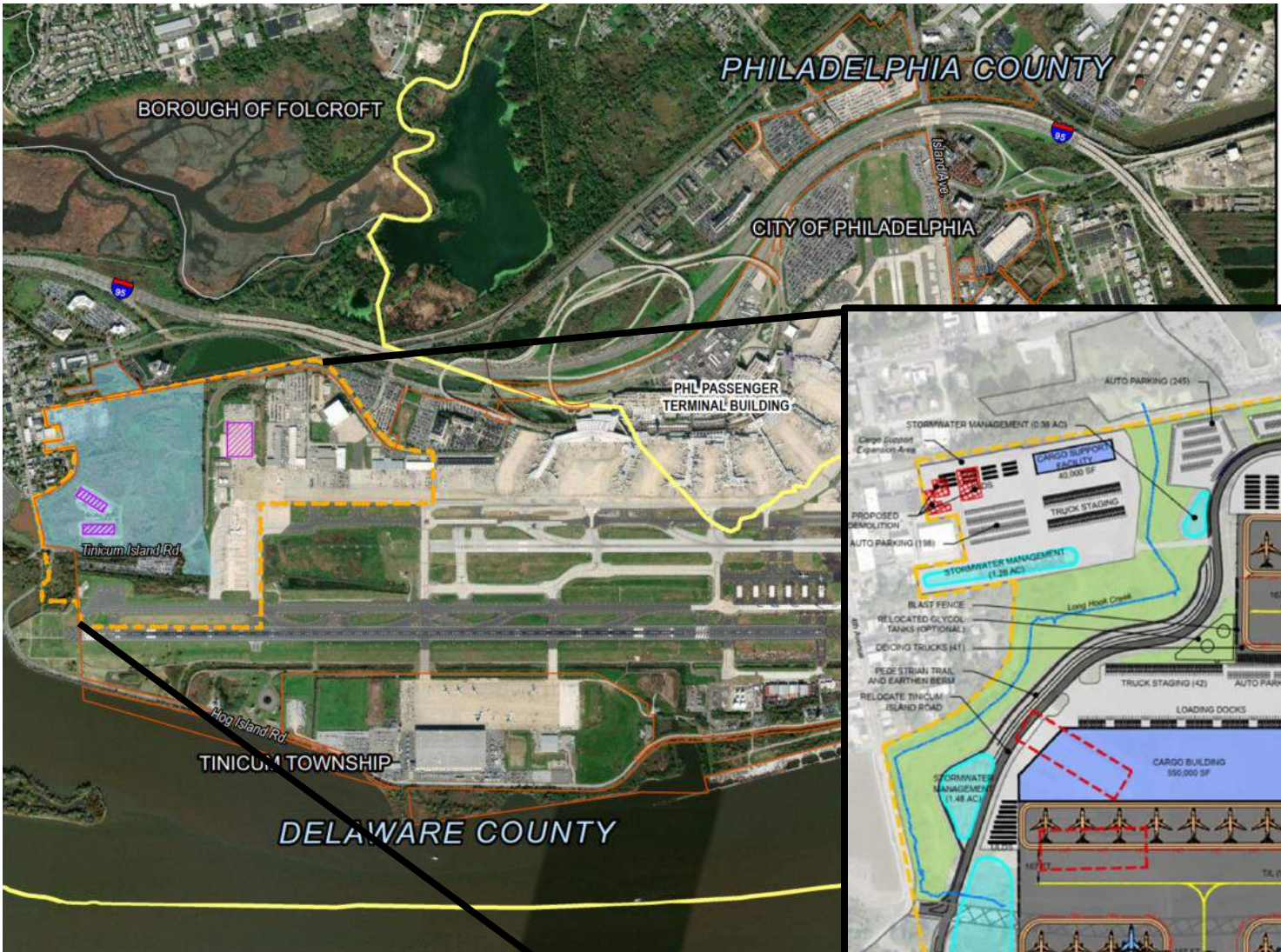


# Highlights of Program Approved by FAA (FONSI)



- **Redevelop existing Cargo City with modern cargo facilities, including:**
  - Over 1M SF of new Cargo Facilities and landside facilities (parking, loading docks, etc.)
  - Over 5M SF of airfield expansion
  - +/- 20 Cargo Aircraft parking positions
  - +/- 10 Additional remain overnight (RON) aircraft parking
  - Additional minor elements to the project may include, but are not limited to, site preparation (grading and excavation); site restoration; tree removal; landscaping; site safety and security lighting; utility extension and connection; sidewalk installation; ancillary structures, etc.
- **Enabling Efforts, including:**
  - Relocate Tinicum Island Road (+/- 1 mile)
  - Relocate existing facilities such as deicing facilities, security fence and gates, etc.
  - Demolish existing Cargo City Building, such as existing buildings C-7 and C-8
  - Utility infrastructure to support the development, including electric, water, wastewater, stormwater management and control
  - Mitigate existing wetlands impacted by project development

# Cargo Facilities Expansion



**Increased  
Cargo at PHL  
stimulates the  
economic  
development  
of the region**

- ✓ Makes Philadelphia more competitive
- ✓ Creates up to 28,100 new jobs
- ✓ Generates economic impact through construction and annual operations impact
- ✓ Increases competitiveness of local companies
- ✓ Consolidates Philadelphia as a strong intermodal cargo region



**Nonstop PHL**

**Thank you**

# Questions & Answers