

What we'll talk about

Where We Are

Traffic Forecast

CARES Act

Keeping You Safe

Let Us Know Your Plans

Where we are

TSA Throughput Snapshot
% decrease from previous years



**Sunday,
March 8th**

-11%



**Sunday,
March 22nd**

-87%



**Sunday,
April 5th**

-96%

Where we are



Traffic forecast

PERIOD	PHL ENPLANED PASSENGERS	CHANGE vs FY 2019
FY 2019 (actual)	16.1M	
FY 2020 (estimated annual)	11.8M	-27%
FY 2021 (budgeted)	7.5M	-53%

CARES Act

CORONAVIRUS AID, RELIEF, AND ECONOMIC SECURITY ACT

3/27/2020

CARES Act signed into law

4/14/2020

FAA announces airports' allotment

PHL = \$116 million

PNE = \$157,000

4/23/2020

Grant application filed with the FAA

Provides approximately 3 to 4 months of cash to support airport operations (debt service, payroll, vendor payments)

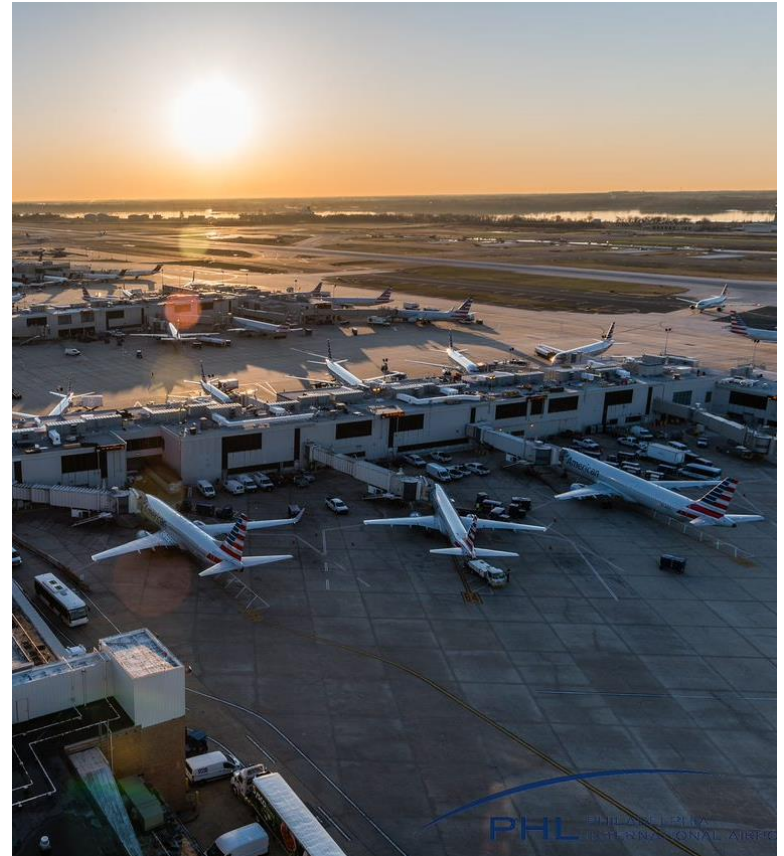


CARES Act

CORONAVIRUS AID, RELIEF, AND ECONOMIC SECURITY ACT

Funding will be used for:

- Drawing down debt service in FY20
- Operating expenses in FY21 and 22
- Funding infrastructure projects, janitorial services, staffing, workforce retention, airport operations, emergency response and debt service payments.
- Relief package to airport tenants, including a 3 month deferral of their rental payments valued at more than \$10 million.

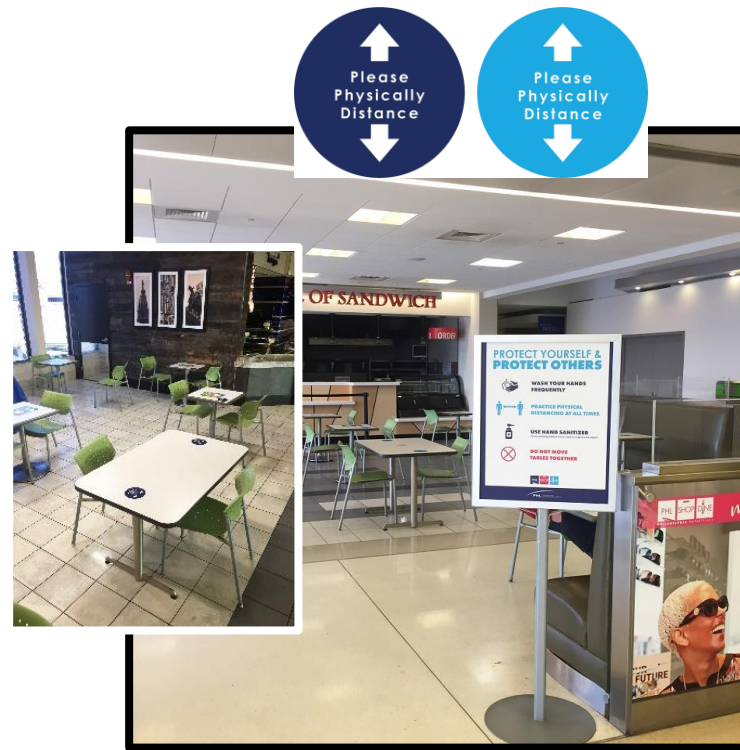


Keeping you safe

Hygiene awareness + distancing



Floor signage at moving walkways.



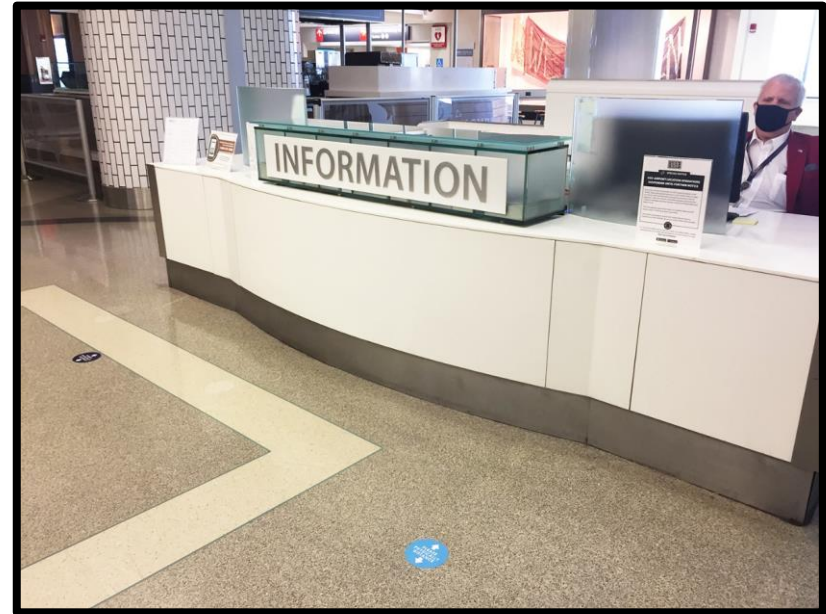
Hygiene reminders at food courts.
Food court tables with distancing decals.

Keeping you safe

Physical distancing



Floor signage
at restroom
entrances.



Floor signage and plexi shields at
Information Counters.

Let us know your plans

Take – and share – our survey!

<https://www.surveymonkey.com/r/7RY2M3H>

Demand

Timing expectations
Policies

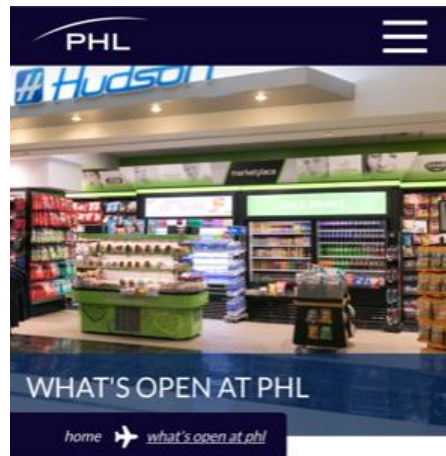
What's
important

Your needs
What's changed

What you'd like
to tell us

Share what you would like
us to know

Stay informed



The health and safety of passengers and staff is paramount to Philadelphia International Airport. During the evolving COVID-19 situation, the more than 170 PHL Food & Shops will right-size their terminal offerings to accommodate adjusted passenger volume levels. Food, drinks and travel essentials will continue to be available within each terminal.

phl.org/covid19
phl.org/open



phl.org/newsroom/rtr