

JULY 2025

# PHL-PNE COMMUNITY NEWSLETTER

PHILADELPHIA INTERNATIONAL AIRPORT - NORTHEAST PHILADELPHIA AIRPORT

## IN THIS ISSUE

Economy Lot  
Redevelopment

Introduction

Preparations

Community  
Information



## SPECIAL EDITION: ECONOMY LOT REDEVELOPMENT

At the Department of Aviation, we're committed to active engagement with our local communities. This edition of the newsletter is to give the community some insight on our newly planned redevelopment of the Economy Parking Lot. We hope you enjoy reading and we look forward to seeing you at the upcoming public information meeting!

---

## Introduction

The City of Philadelphia Department of Aviation is planning to redevelop the west side of the Economy Parking Lot at Philadelphia International Airport (PHL). Under the proposed redevelopment plan, the surface parking lot next to Terminal F would be used for three new facilities: an aircraft maintenance hangar, an airline support building, and a rental car quick turnaround (QTA) facility. Additionally, if the proposed projects go forward, the east side of the Economy Lot would be reconfigured to allow for a dedicated access road to be constructed on airport property between the existing intersection at Island Avenue and the project site.

PHL is reviewing development proposals for all three facilities and coordinating with prospective tenants about their operational needs. Based on preliminary discussions, the aircraft maintenance hangar would be developed in two phases, starting with a 70,000 square foot high-bay hangar for two aircraft, followed by a 30,000 square foot expansion for one additional aircraft depending on future demand. Additional support facilities include overnight parking for three aircraft adjacent to the hangar, fire suppression tanks, truck loading docks adjacent to the building to receive deliveries, and approximately 130 parking spaces for employees and visitors.



.....

The airline support building consists of a single-story warehouse-type building with 70,000 square feet of flexible space that can be divided and leased for airline support functions. Approximately two-thirds of the building would be used for servicing airline ground support equipment (GSE), and one-third would be used for receiving and storing aircraft provisions and for processing belly cargo. Additional support facilities include apron pavement for GSE circulation; staging, storage, and a wash facility; loading docks for receiving cargo truck deliveries; and approximately 110 parking spaces for employees and visitors.



The rental car QTA facility includes a 2,300 square foot customer service building, a service area with a wash rack and fueling station, rental car parking (65 spaces for ready cars, 36 spaces for return cars, and 36 spaces for queue/stacking/storage, as well as customer and employee parking).



## Preparations

Site preparation activities involve pavement demolition and removal, utilities relocation, earthmoving and placement of fill material, and installation of stormwater management facilities required to comply with state and local permits and approvals for land development. Engineering, design, and permitting processes are underway. Construction activities would occur over a five-year period with the first operational year scheduled for 2030.

Federal Aviation Administration (FAA) regulations require an Environmental Assessment (EA) to be prepared and released for public comment before construction can begin. An EA is an examination of

a proposed project, before it is implemented, and ensures compliance with all applicable special purpose environmental laws and regulations. A 75-page Draft EA report has been prepared, and an in-person Public Information Meeting will be held. Comments on the Draft EA will be documented and addressed in the Final EA report, together with the FAA's environmental determination.

The Department of Aviation and FAA welcome any and all feedback on the proposed project throughout the duration of the public comment period that will start on June 15th and close on July 15th. There are several ways to engage with the design team to learn about and comment on the proposed project.

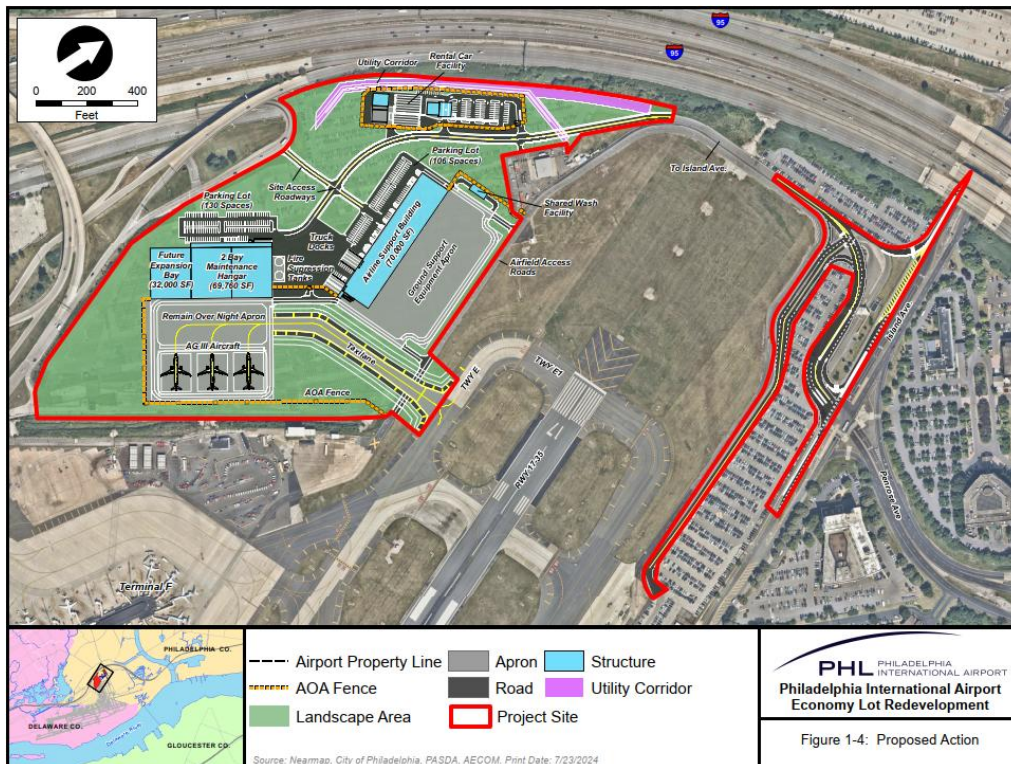


## Community Information

The Department of Aviation will host an in-person public information meeting to entertain questions, facilitate discussion, and collect feedback and comments from those who believe their interests may be affected by the proposal. The in-person public information meeting will be held July 8, 2025, at the John Heinz National Wildlife Refuge Visitor Center located at 8601 Lindbergh Blvd., Philadelphia, PA 19153, between 4-8PM.

The Department of Aviation has also created a virtual public open house website that can be accessed at <https://phl.consultation.ai/>. The virtual public open house is a digital space that allows users to explore more information about the project at their own convenience and will be accessible for the duration of the public comment period. Comments on the proposed project may be submitted virtually through the "How to Leave a Comment" tab on the website.

Comments on the proposed redevelopment on the Economy Lot may also be submitted via email to [econlotea@phl.org](mailto:econlotea@phl.org) or may be submitted by mail to the following address: AECOM, RE: Economy Lot EA, 1635 Market Street, Floor 10, Philadelphia PA, 19103.



FOLLOW US!



Philadelphia International Airport



@PHL\_airport



@PHLAirport